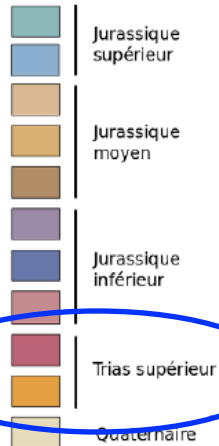
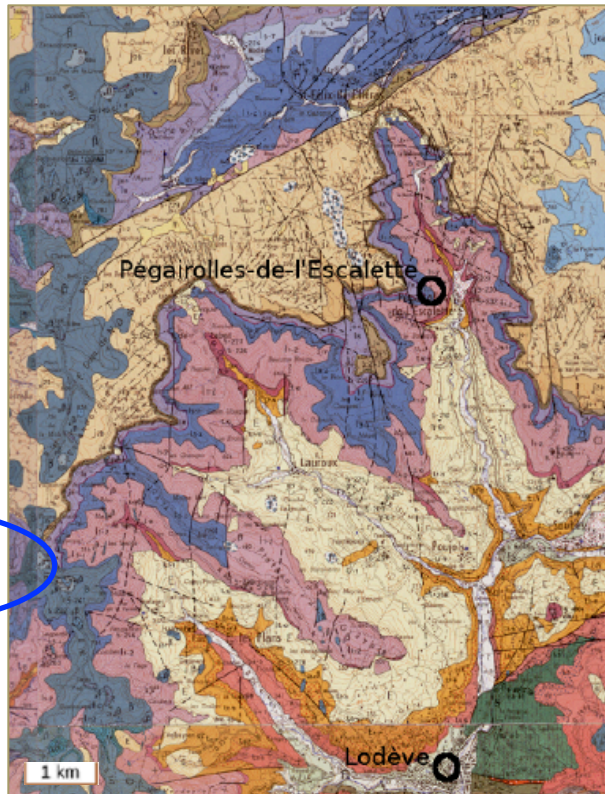
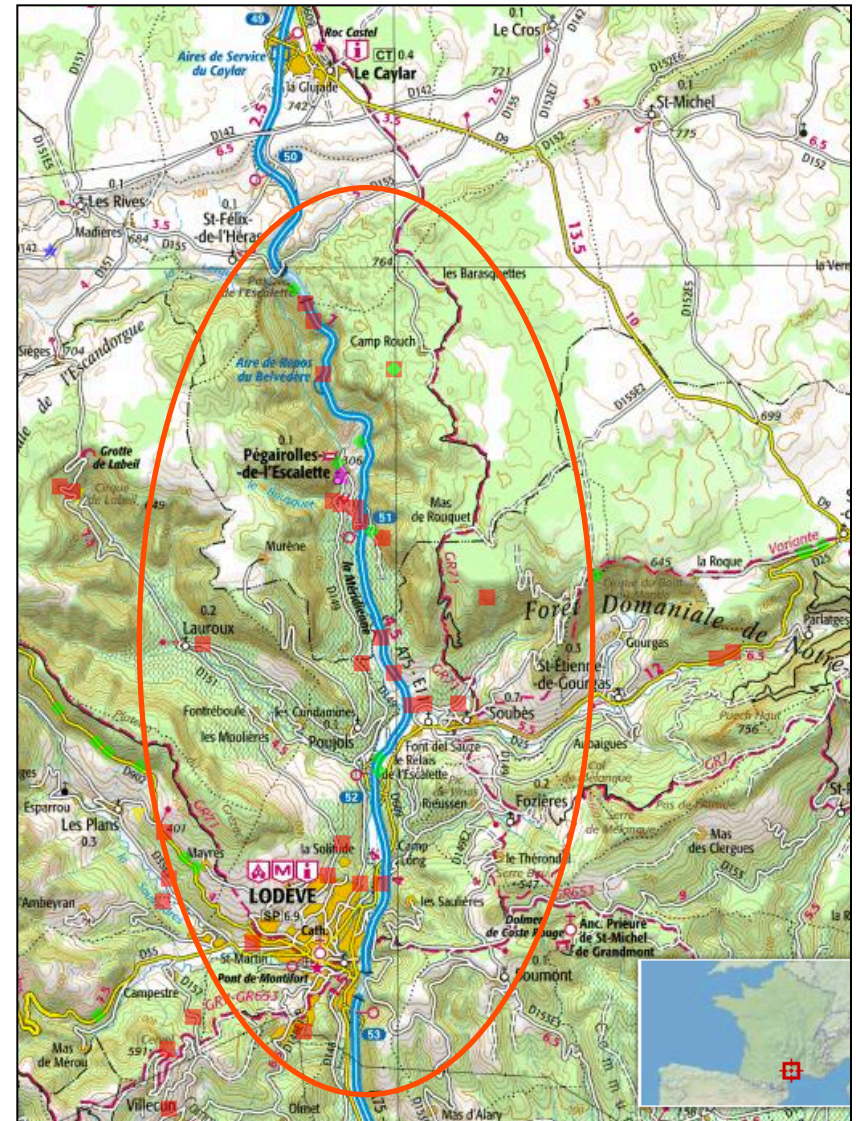
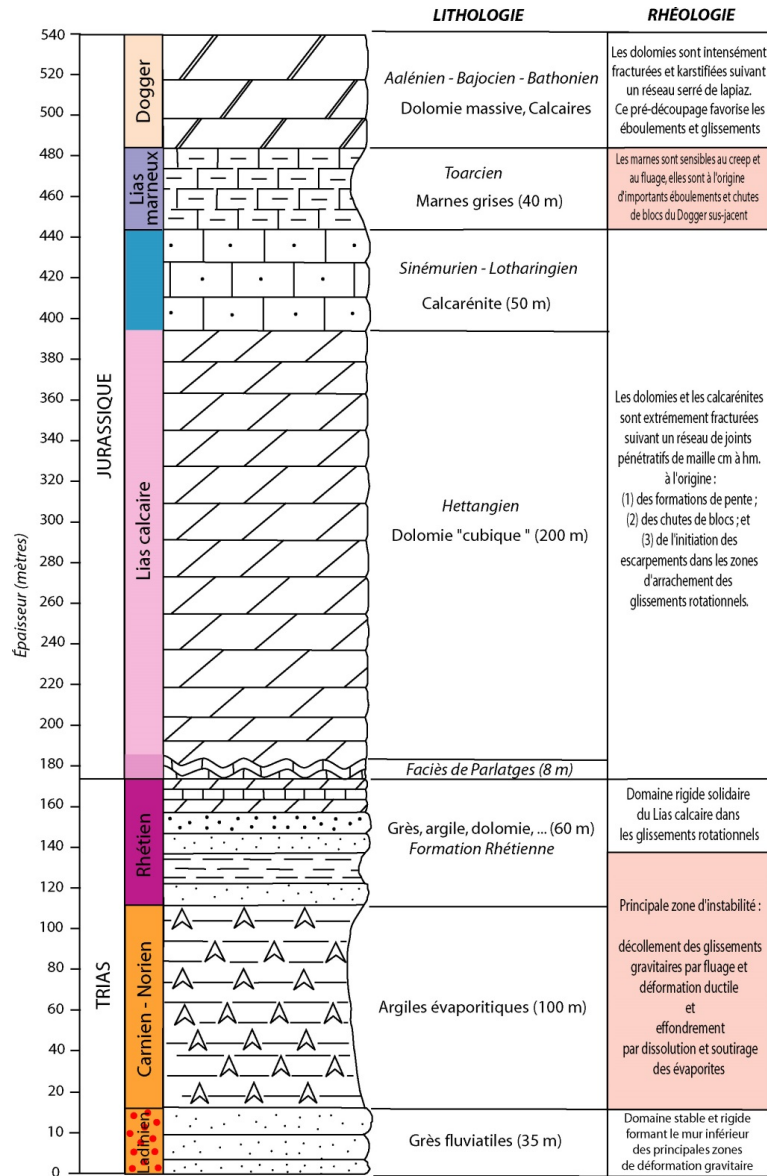


NW Hérault - bordure Grands Causses .



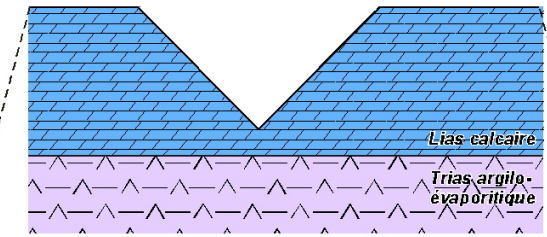
- ✓ Deux environnements de dépôts
- ✓ Stratification tabulaire
- ✓ Failles sub-verticales N170 et N060



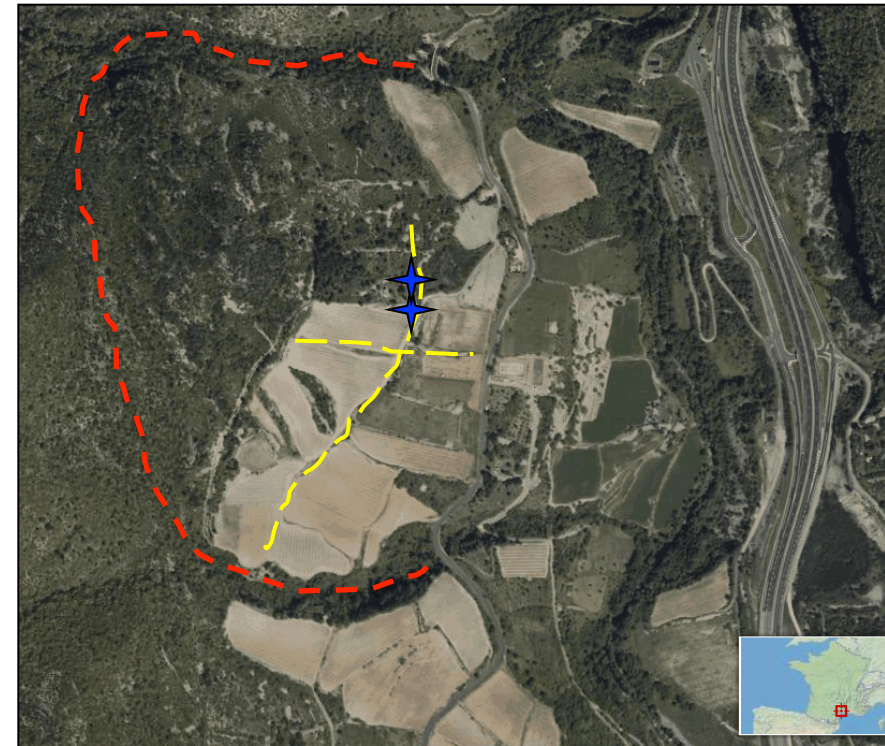
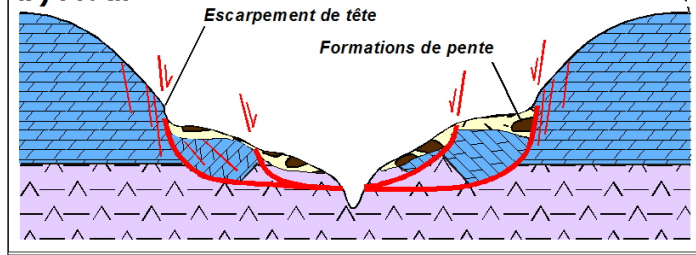


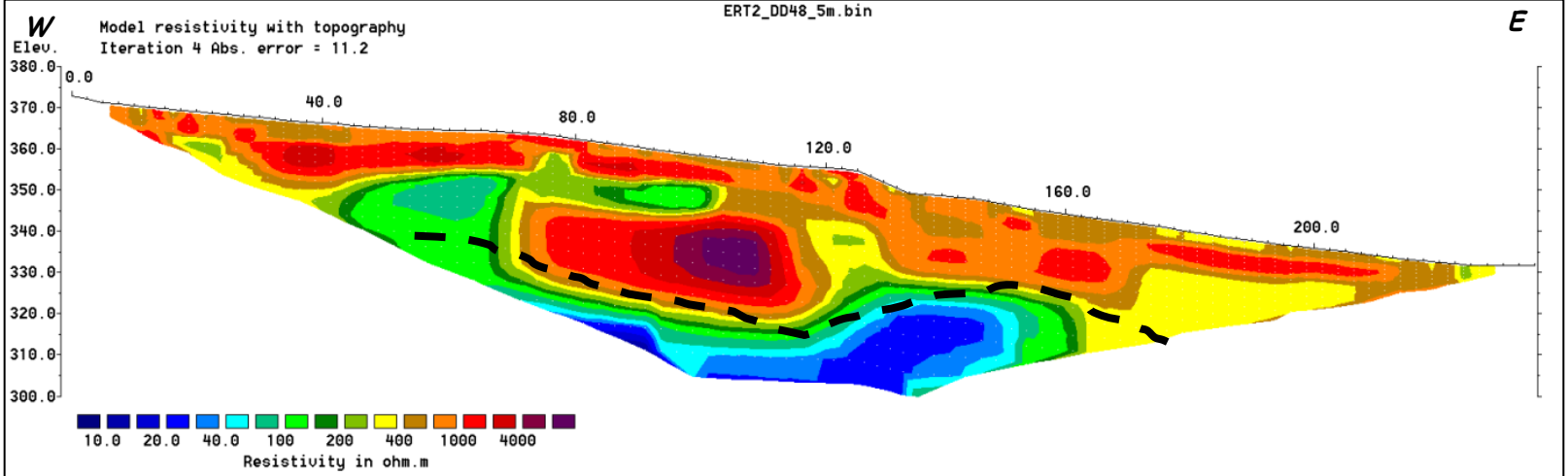
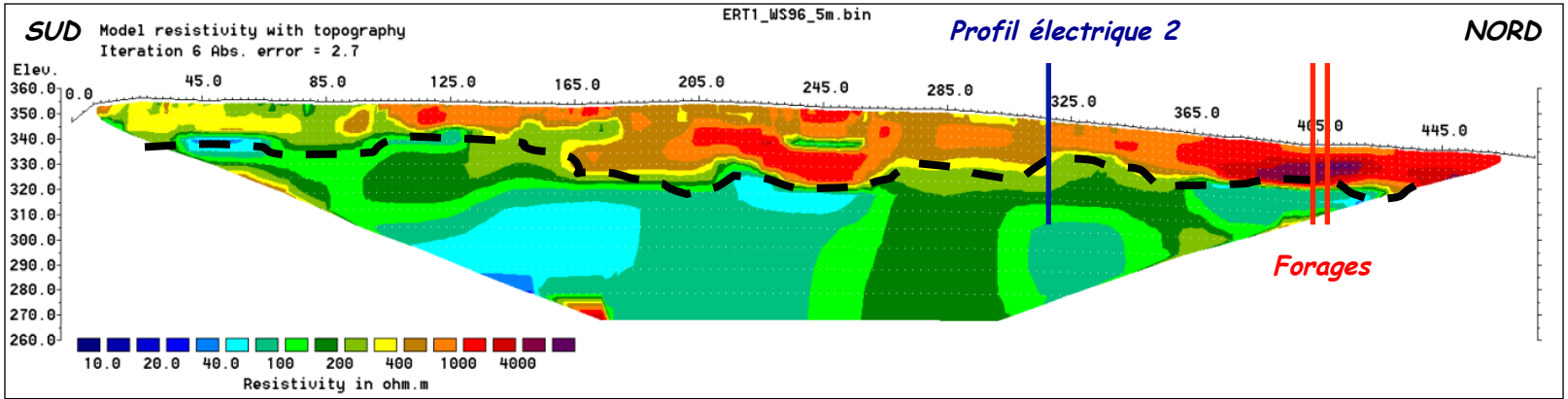
Épaisseur (mètres)

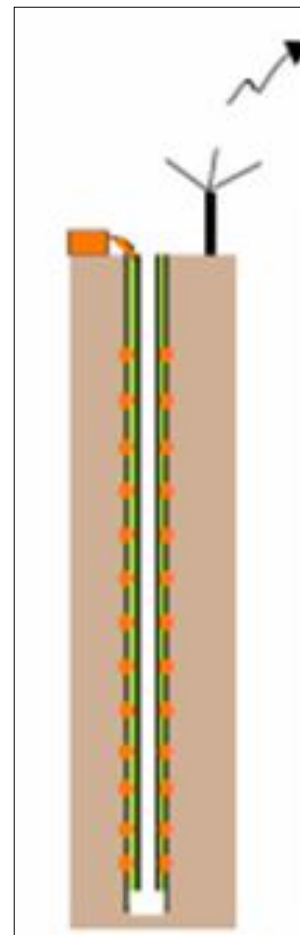
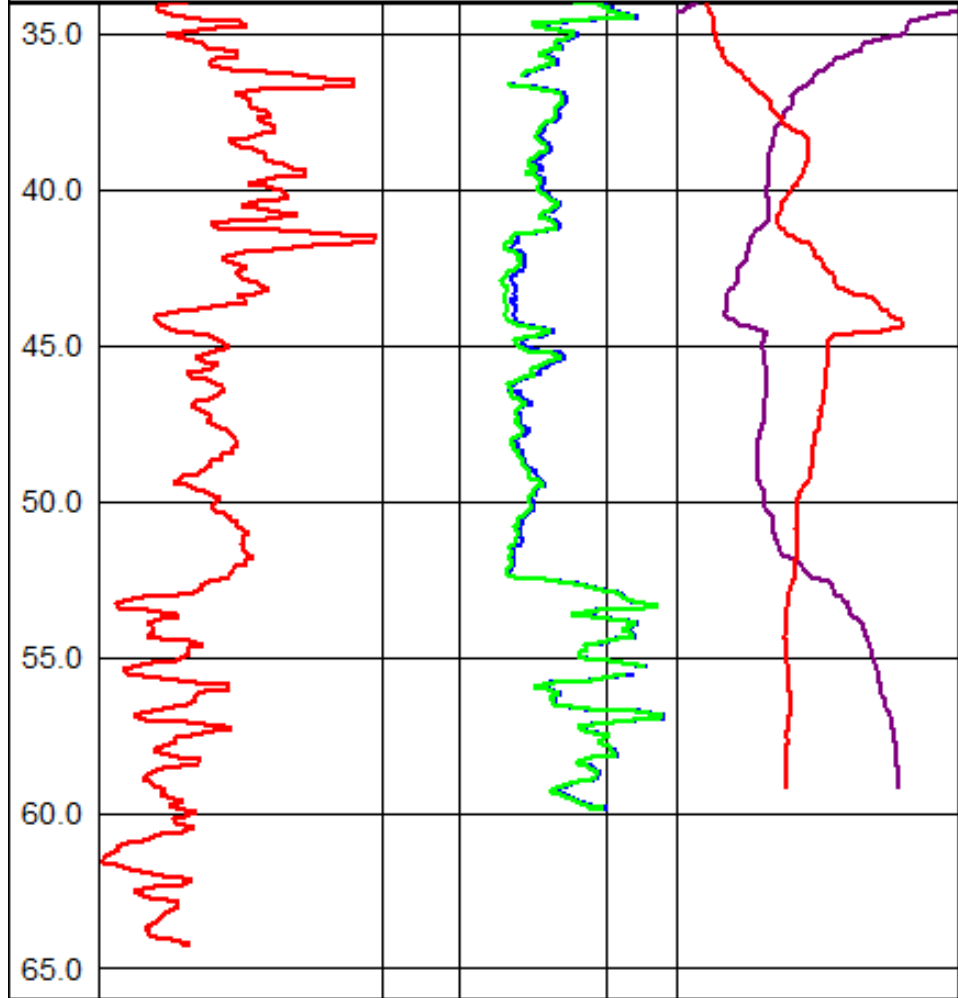
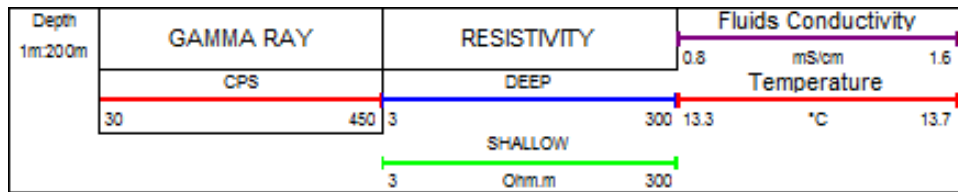
a) Amont



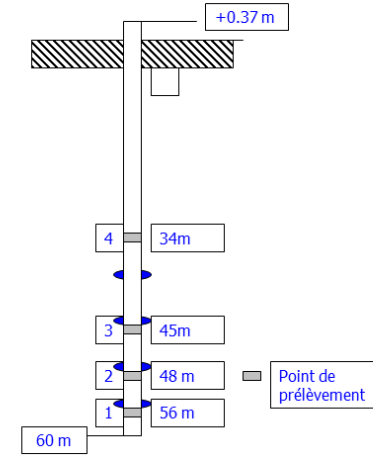
b) Aval



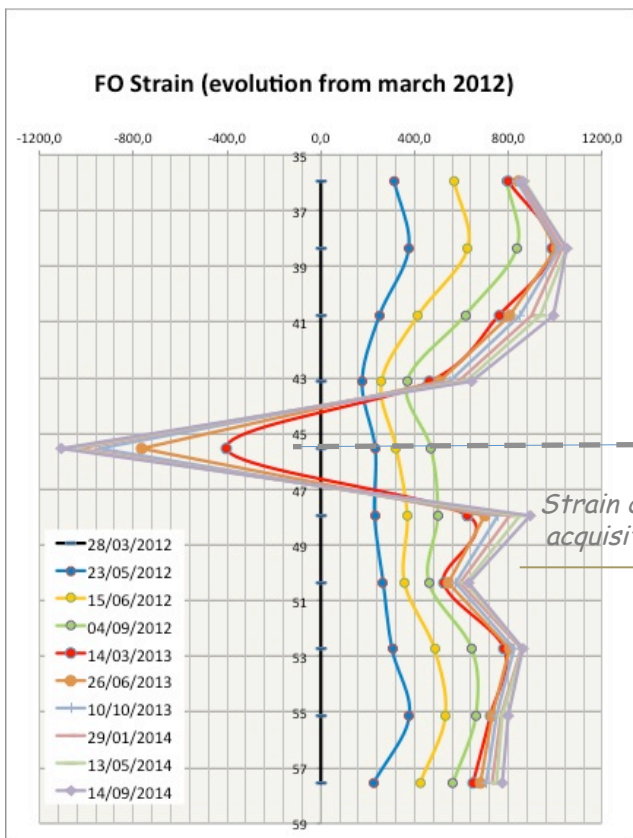




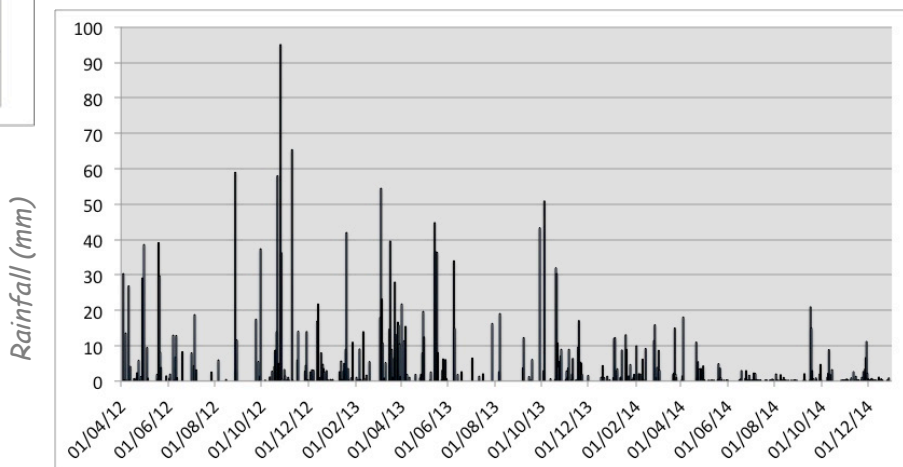
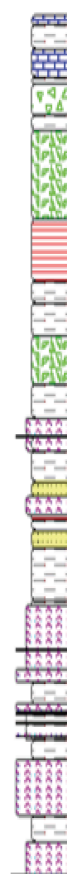
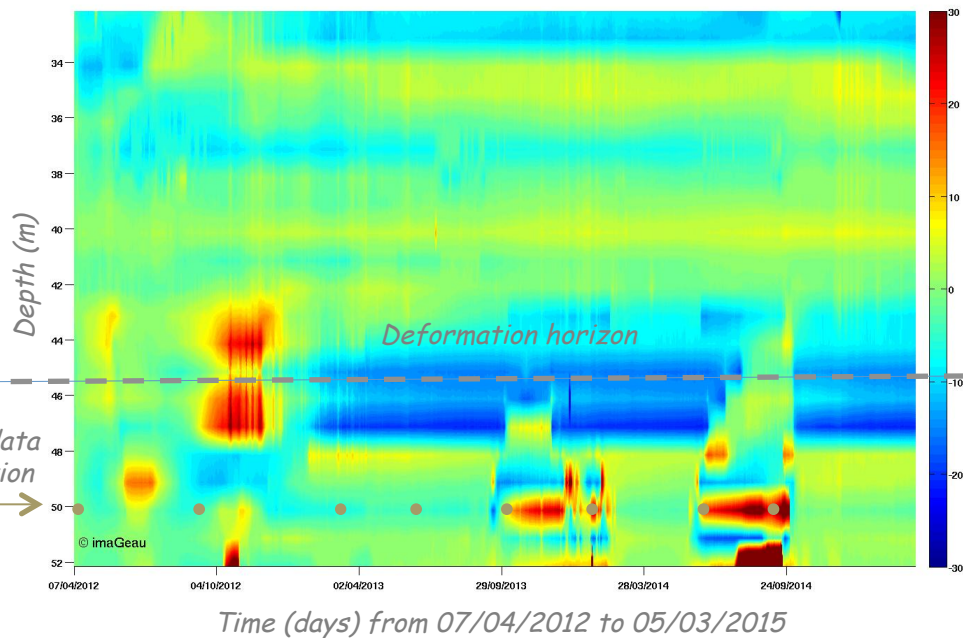
Observatoire Multi-piézomètres



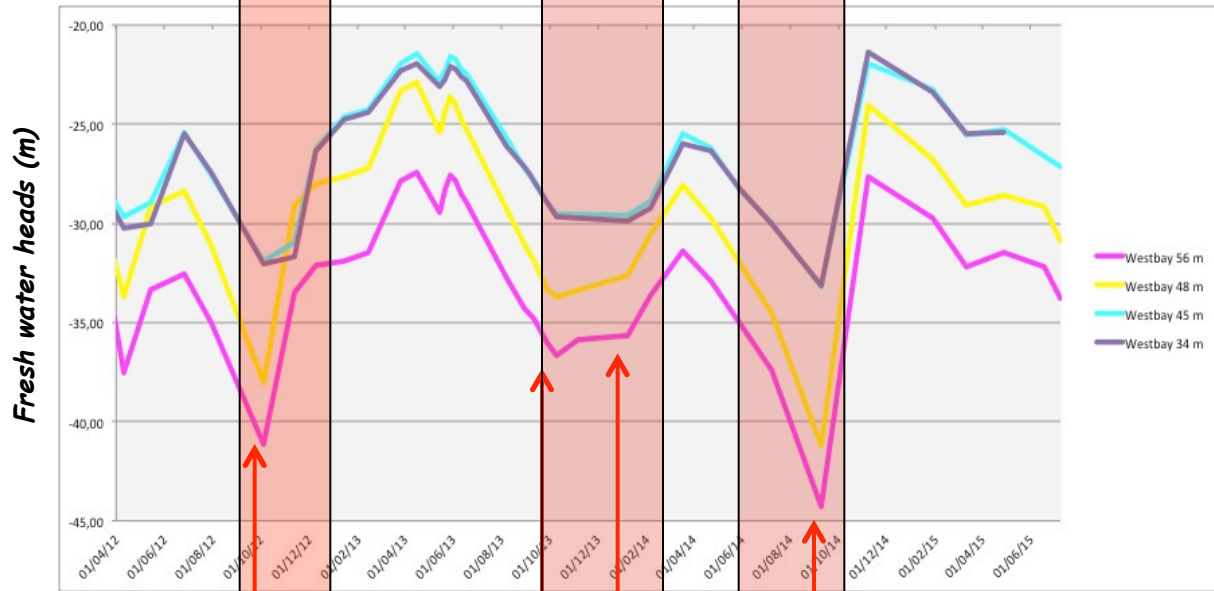
Observatoires de résistivité et déformation (3 ans)



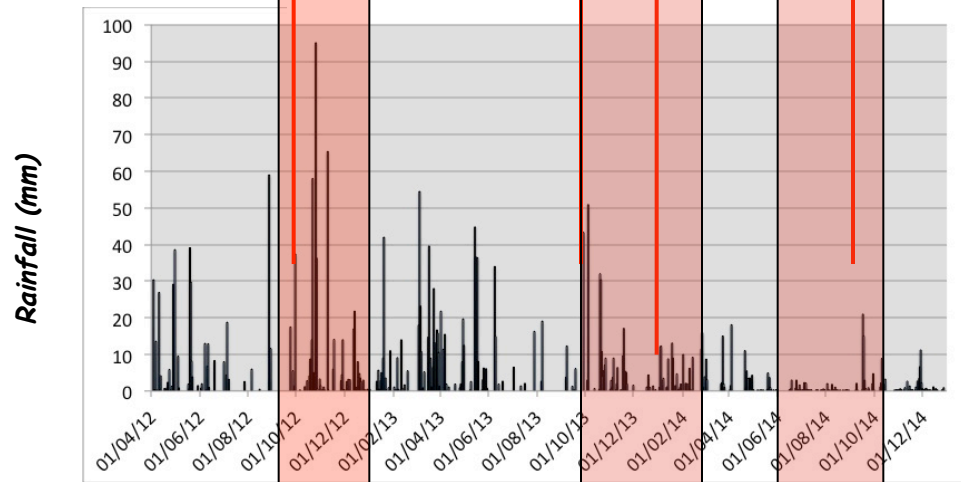
Resistivity difference ($\Omega.m$) with respect to the baseline.



Synthèse du suivi temporel (3 ans)



Time (days) from 01/04/2012 to 06/07/2015



Résistivité:
Vidange
Drainage

