



ENGLISH4IFSI  
SEMESTERS 1 & 2

# WELCOME... BACK

1

Sylvie Testard

ENGLISH TEACHER  
Formation IFSI – Semestres 1 et 2







# Introduction







# At a glance



**01** 2 hours per week – Terms 1 & 2  
Tuesdays 15:30/17:30

---

**02** September 5<sup>th</sup> – October 24<sup>th</sup> 2024 (8 weeks)  
December 7<sup>th</sup> – 19<sup>th</sup> 2024 (3 weeks)  
January 9<sup>th</sup> – February 13<sup>th</sup> + Feb. 27<sup>th</sup> – March 6<sup>th</sup> 2025 (8 weeks)  
June 5<sup>th</sup> – July 10<sup>th</sup> 2025 (6 weeks)

---

**03** Sylvie Testard  
[Sylvie.testardramirez@ugecam.assurance-maladie.fr](mailto:Sylvie.testardramirez@ugecam.assurance-maladie.fr)

---







# Objectives

01 Learning English medical vocabulary to communicate with English-speaking patients or medical professionals

---

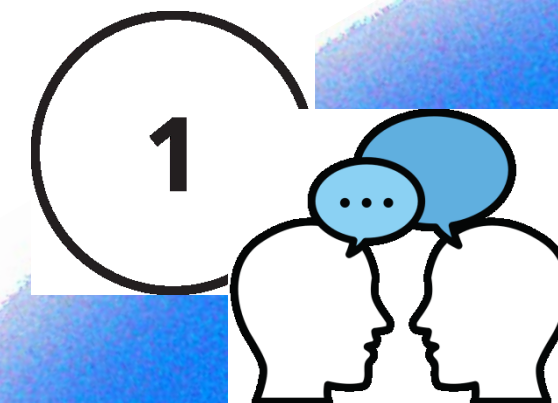
02 Learning English medical vocabulary to read professional literature in English

---



Course designed to get started in medical English  
Many exercises will require you to work with fellow students  
Oral presentations – Group work  
Work on English4medical – individual & autonomous work

---





# How to work together (1)

01 Documents given in class

---

02 Documents used and corrections to be posted on Theia each week

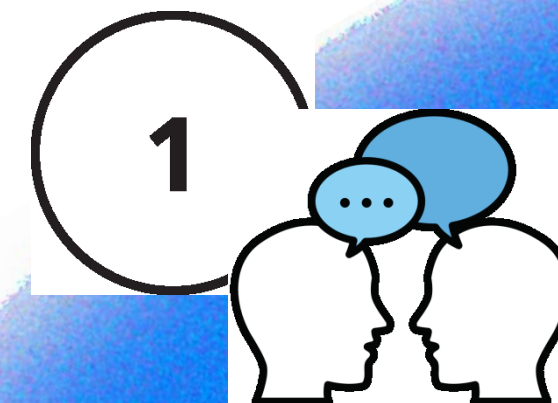
---

03 Interaction and group work  
Respecting each other

---

04 Mobiles in silent mode

---







# How to work together (2)

Session – 2 groups vs level

Group 1 – Beginners/Pre-Intermediate

Group 2 – Intermediate/Adv.

1 hour on the platform – autonomous work

1 hour with the class



English4  
work

Let's explore it

[Medical English Online Course](#)



ENGLISH4NURSING  
WEEK 1\_SEMESTERS 1 & 2



# How to connect

**English<sup>medical</sup>+** DASHBOARD MY CLASSROOMS HELP MORE... S

← **IFSI - YEAR 1\_S1**

My Classrooms | Class Students | Class Wall | Grade Activities | Class Certificate

✦ You are using 4 of 5 allowed classrooms and 17 of your 100 allowed students.

**SELECTED CLASSROOM:** EDIT IFSI - YEAR 1\_S1

**MY CLASSROOMS:** IFSI - YEAR 1\_S1 IFSI - YEAR 1\_S2 IFSI - YEAR 2\_S3 IFSI YEAR 2 S4 NEW

---

**CLASS DETAILS** CID: 27523

PAUSE CLASSROOM ARCHIVE CLASSROOM

**Name:** IFSI - Year 1\_S1

**Class Key:** d73863ae688fcb68 i

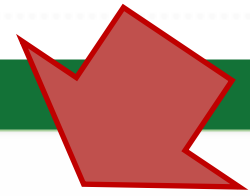
**Teacher:** Sylvie Testard

**Size:** 0 active students

**Created:** 2023-06-05

**Settings:**

Activity Help: Yes	Reading Comp: Yes	Grade Type: Domain (Medicalenglish)	Activity Restarts: Yes	Advanced Mode: No	Disable Speaking: No	Disable Writing: No	Completion Lock: No
--------------------	-------------------	-------------------------------------	------------------------	-------------------	----------------------	---------------------	---------------------





# Evaluations

- S1 & S2 Work/Oral interaction in class**
- Oral test/presentation + Quizzes**
- Work on English4Medical platform**

