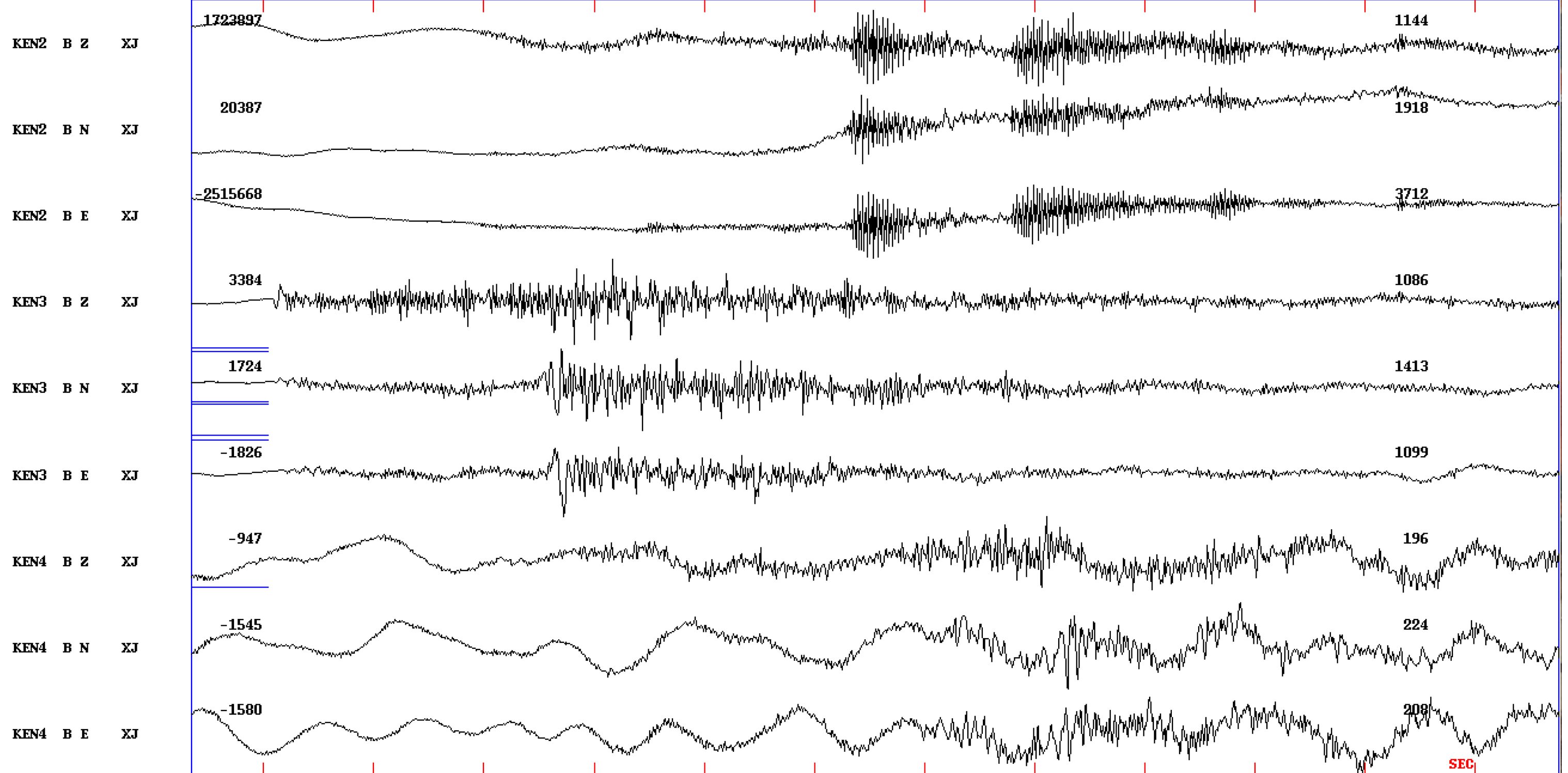


2014 626 20 1 11.0 L

Plot start time: 2014 6 26 20: 1 30.698



Event # 74

32

34

36

38

40

42

44

46

48

50

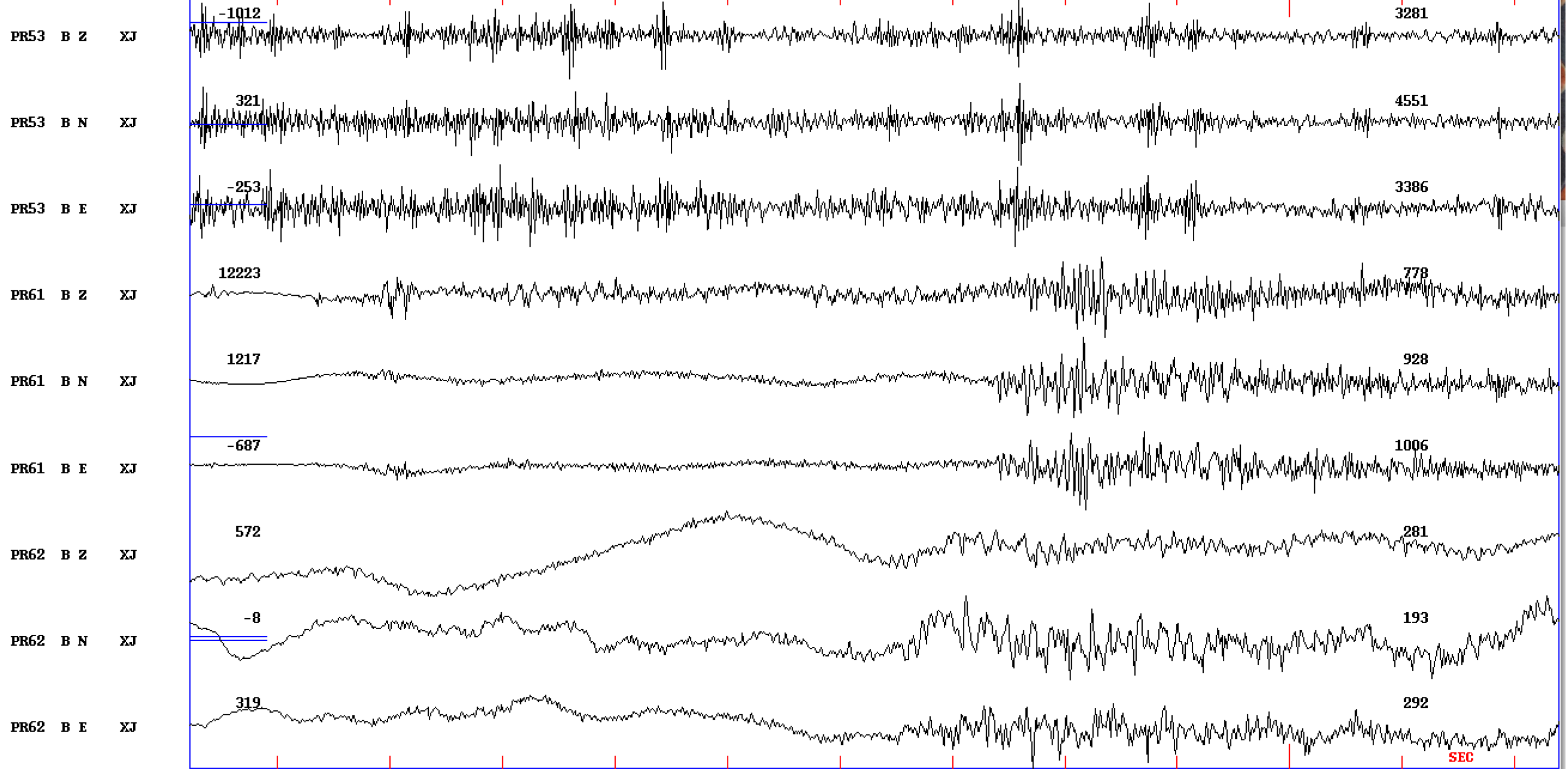
52

54

SEC

2014 626 20 1 11.0 L

Plot start time: 2014 6 26 20: 1 40.449



Event # 74

1m42

44

46

48

50

52

54

56

58

2m00

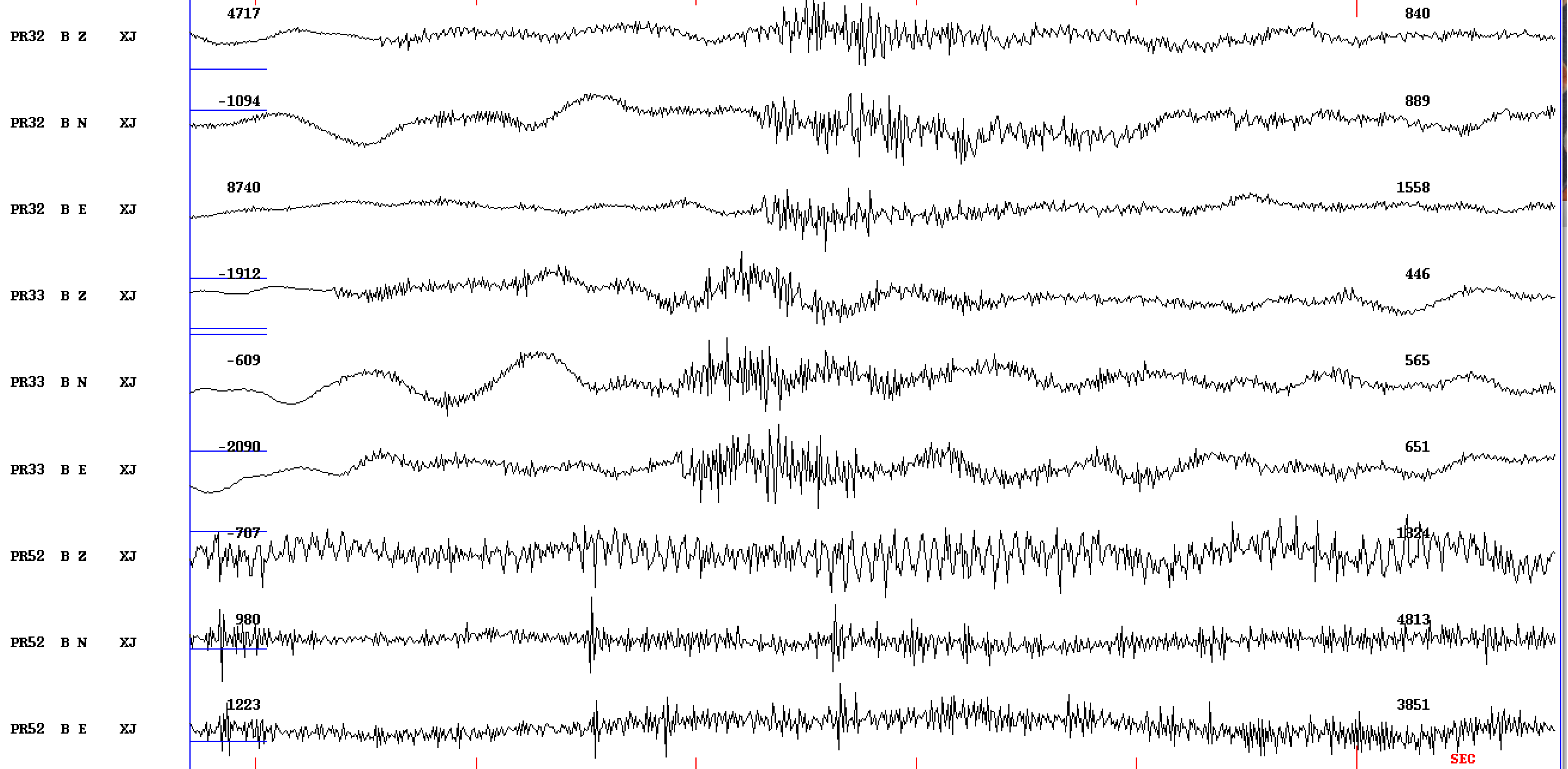
2

4

SEC

2014 626 20 1 11.0 L

Plot start time: 2014 6 26 20: 1 33.499



Event # 74

1m35

40

45

50

55

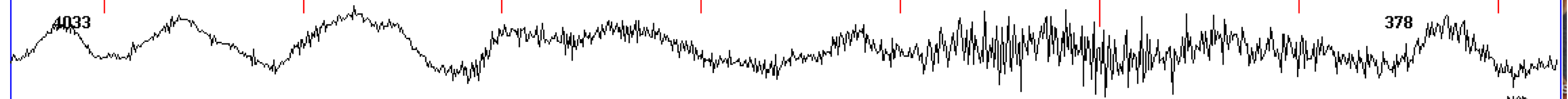
2m00

SEC

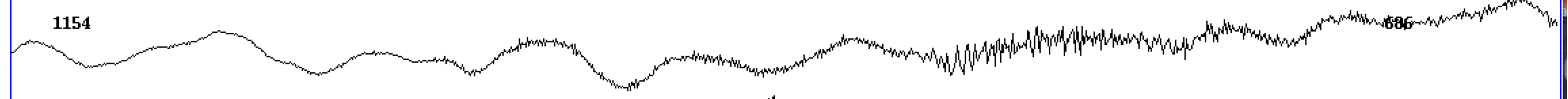
2014 626 20 1 11.0 L

Plot start time: 2014 6 26 20: 1 32.671

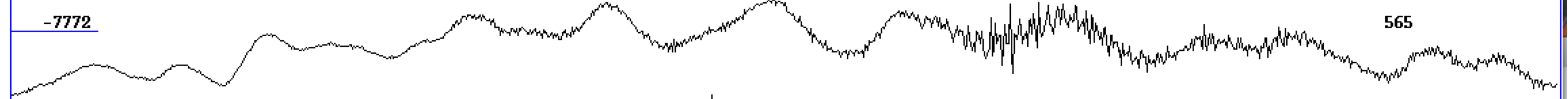
NG56 B Z XJ



NG56 B N XJ



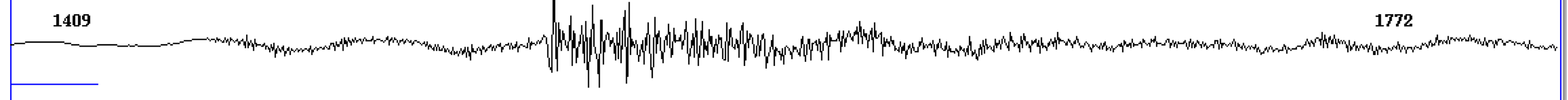
NG56 B E XJ



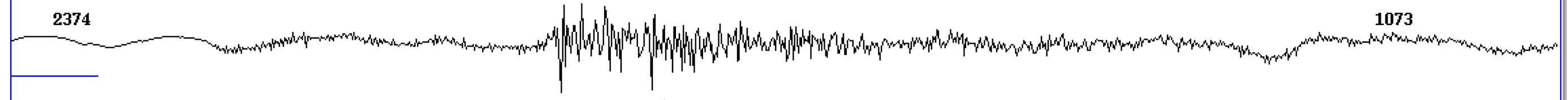
PR11 B Z XJ



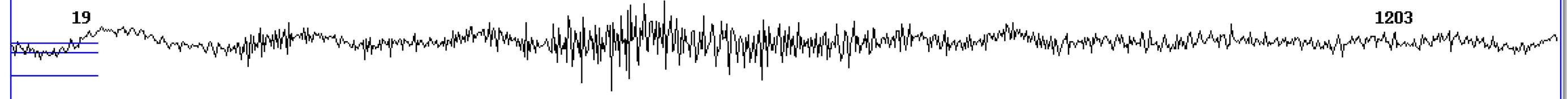
PR11 B N XJ



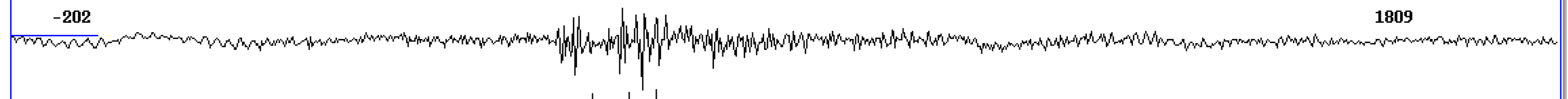
PR11 B E XJ



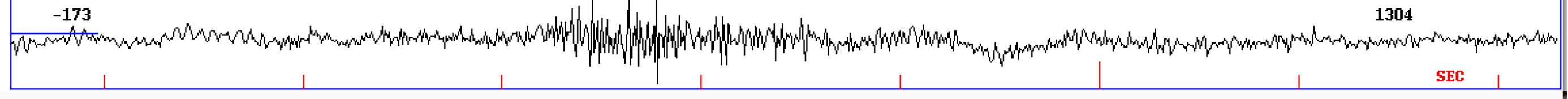
PR31 B Z XJ



PR31 B N XJ



PR31 B E XJ



SEC

Event # 74

1m35

40

45

50

55

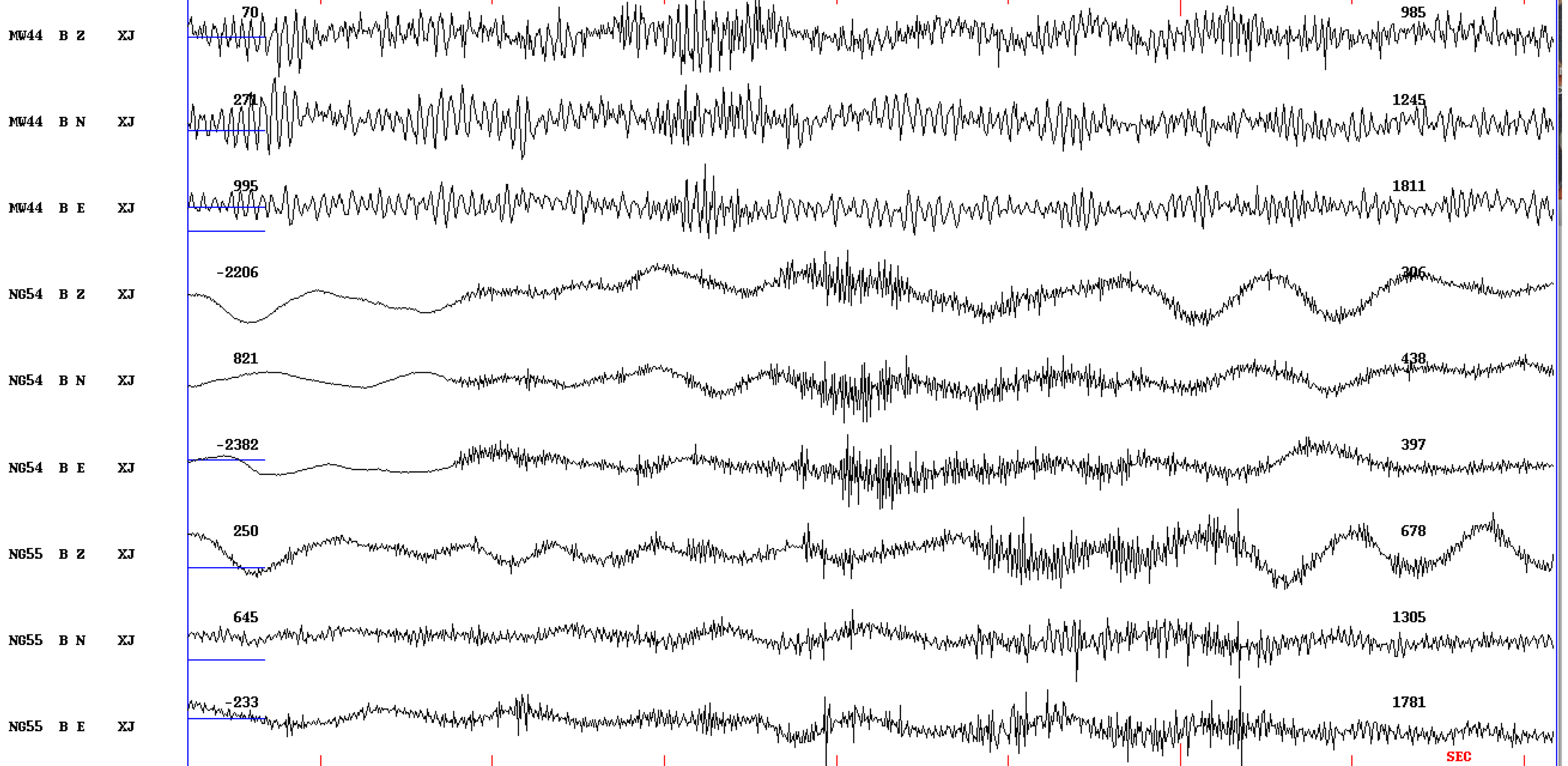
2m00

5

10

2014 626 20 1 11.0 L

Plot start time: 2014 6 26 20: 1 31.151



Event # 74

1m35

40

45

50

55

2m00

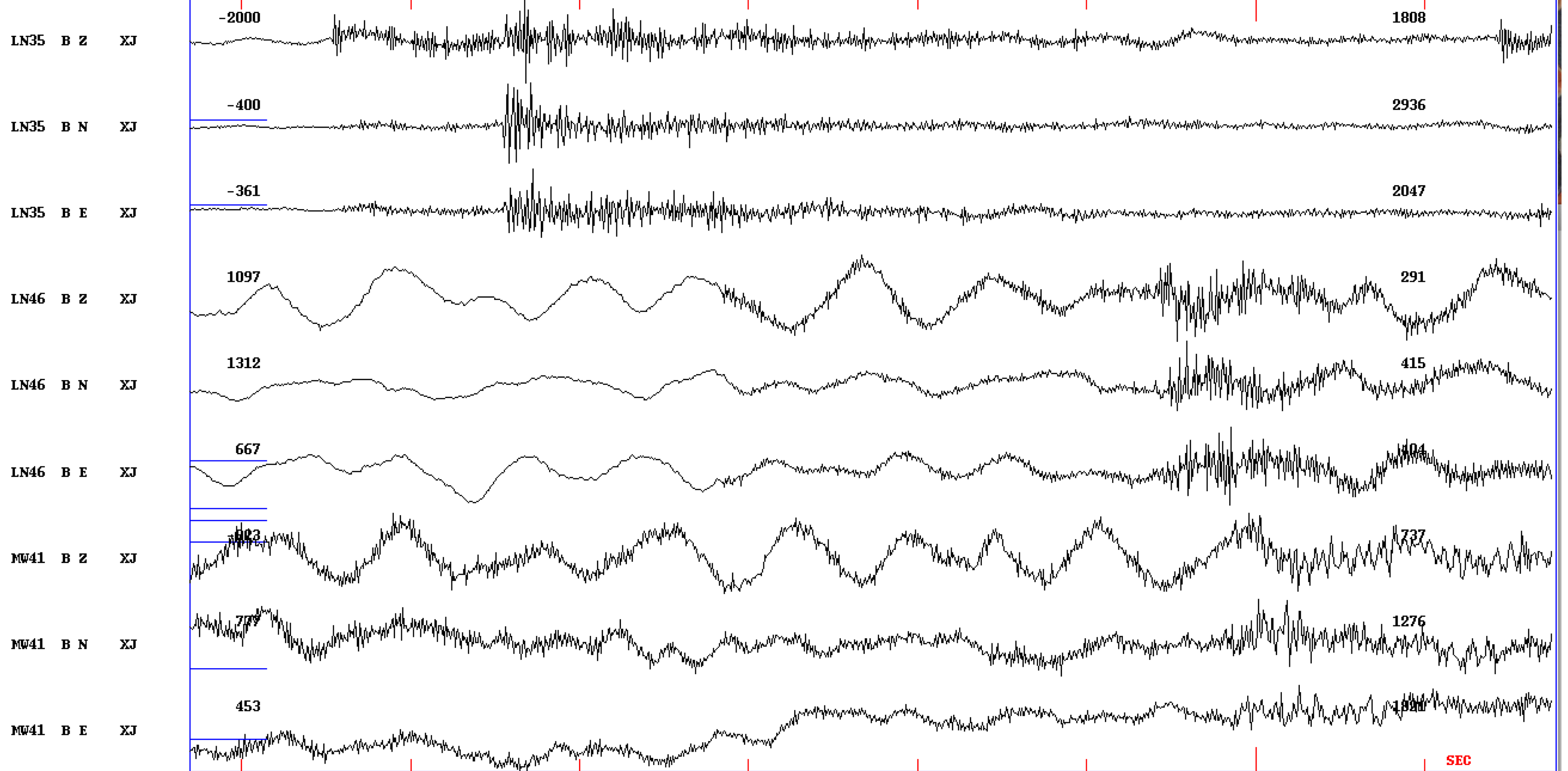
5

10

SEC

2014 626 20 1 11.0 L

Plot start time: 2014 6 26 20: 1 28.481



Event # 74

1m30

35

40

45

50

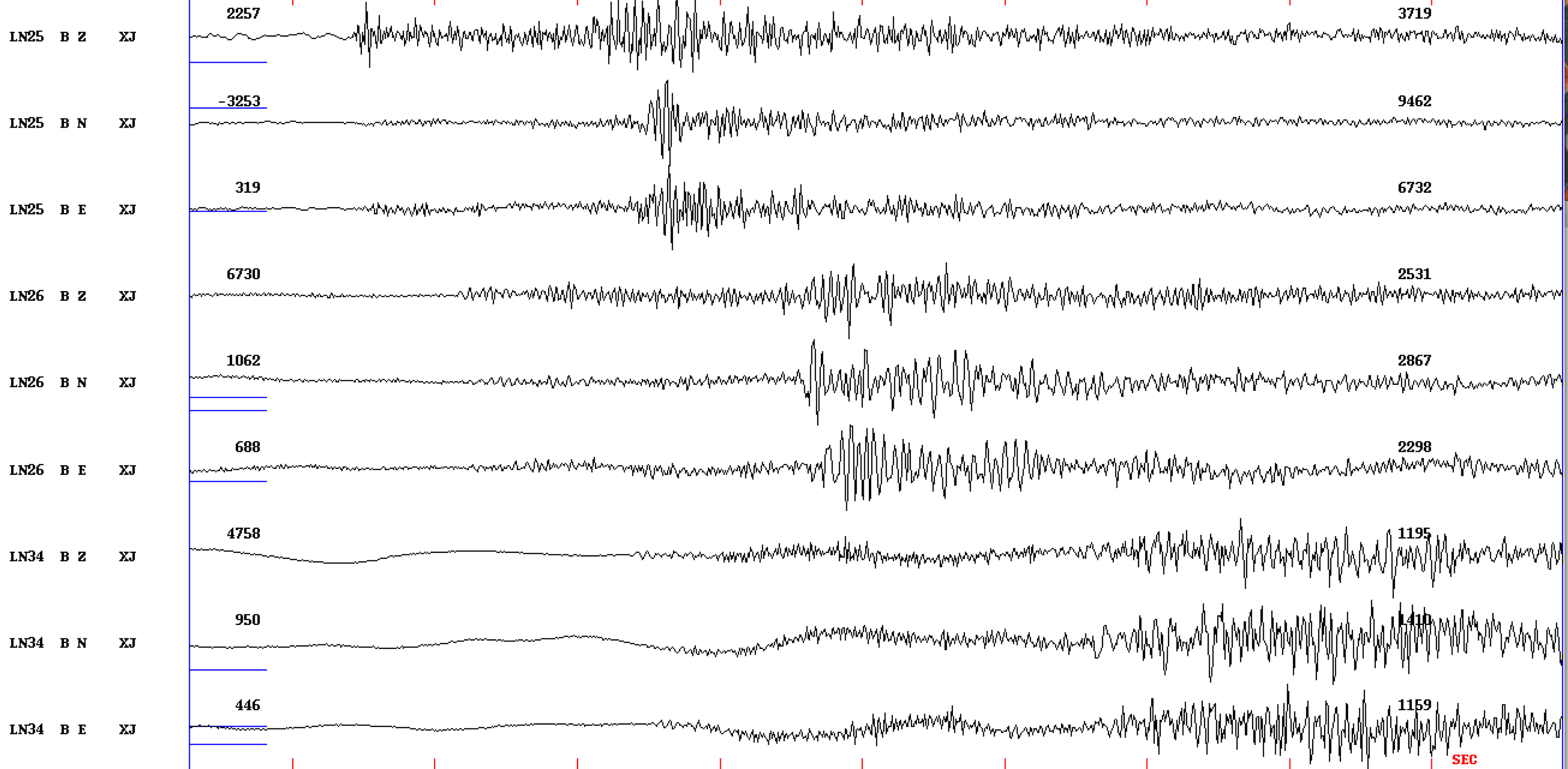
55

2m00

5

SEC

2014 626 20 1 11.0 L
Plot start time: 2014 6 26 20: 1 28.557



Event # 74

1m30

32

34

36

38

40

42

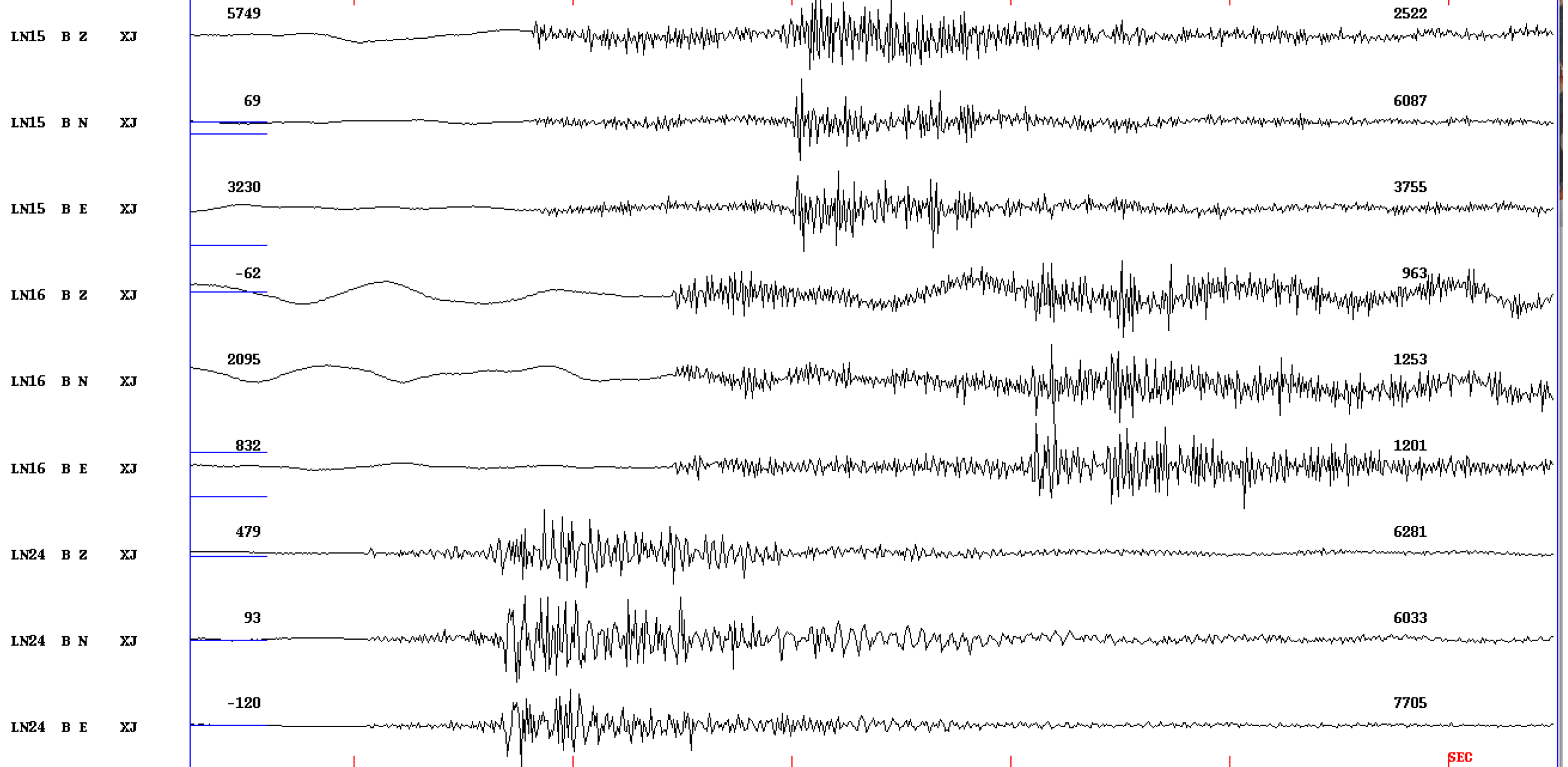
44

46

SEC

2014 626 20 1 11.0 L

Plot start time: 2014 6 26 20: 1 26.260



Event # 74

1m30

35

40

45

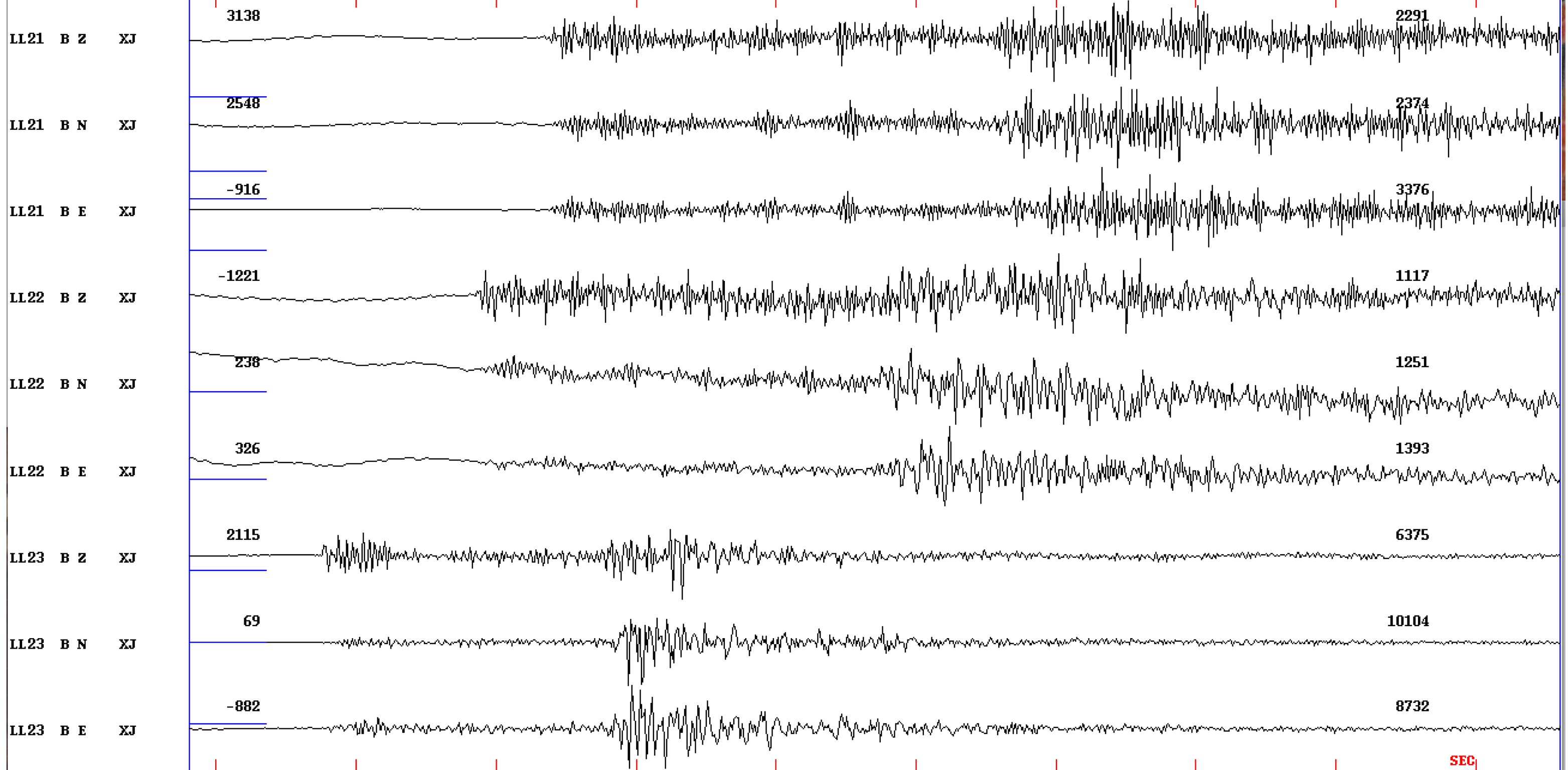
50

55

SEC

2014 626 20 1 11.0 L

Plot start time: 2014 6 26 20: 1 29.624



Event # 74

1m30

32

34

36

38

40

42

44

46

48

SEC