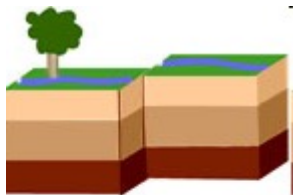
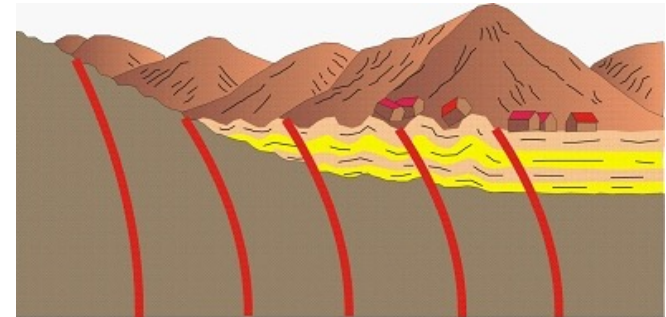
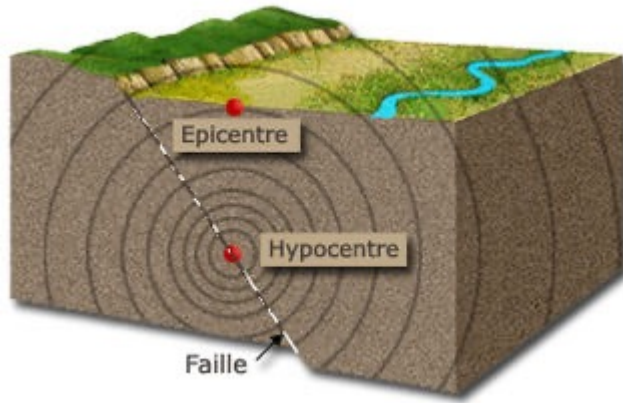
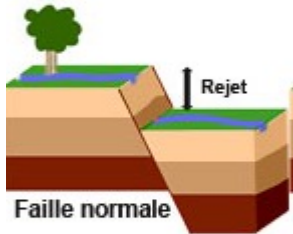


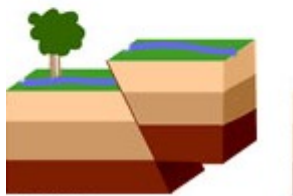
# GLST306 – Cours n° 1



Faille décrochante



Faille normale

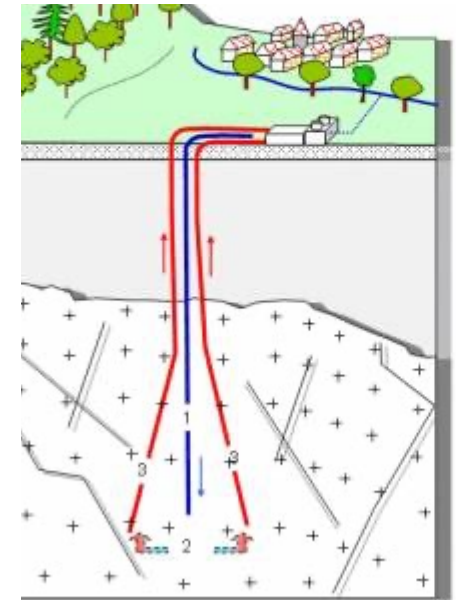
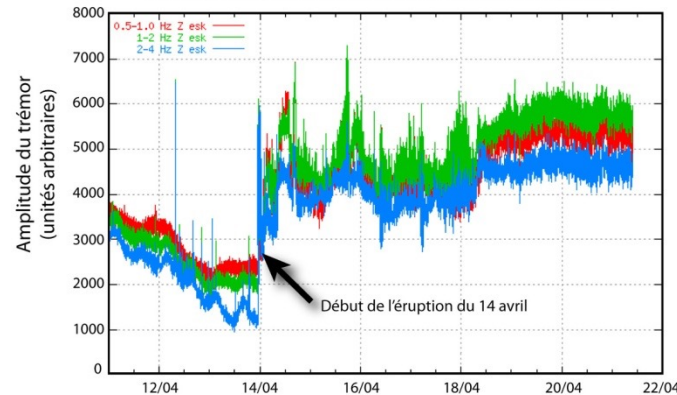


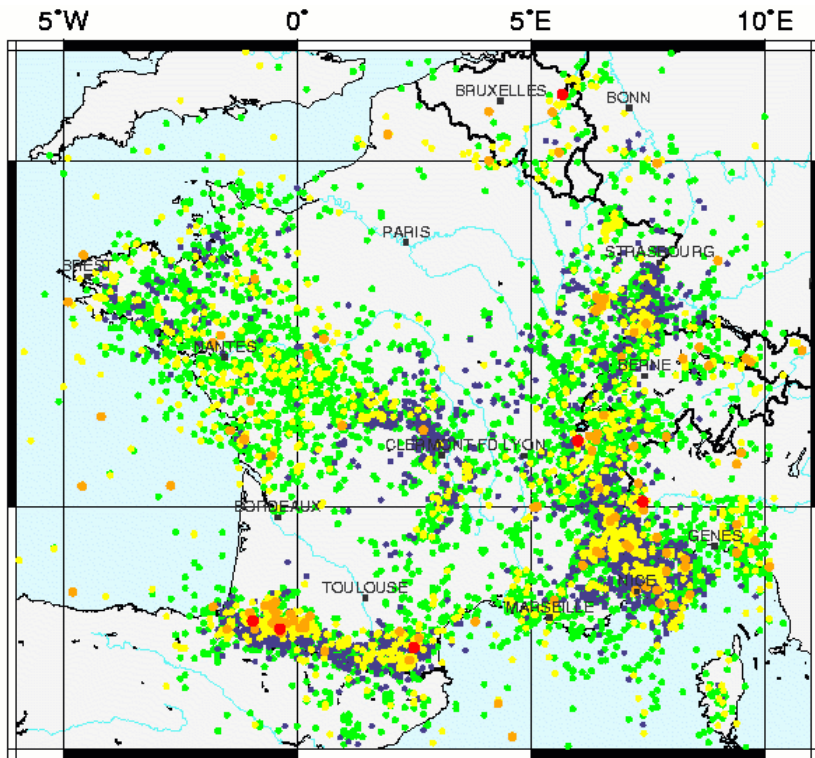
Faille inverse



## Trémor volcanique du Eyjafjöll

Station Eystri-Skogar - Earth sciences Institute - Nordic Volcanoligal center





**ReNaSS**

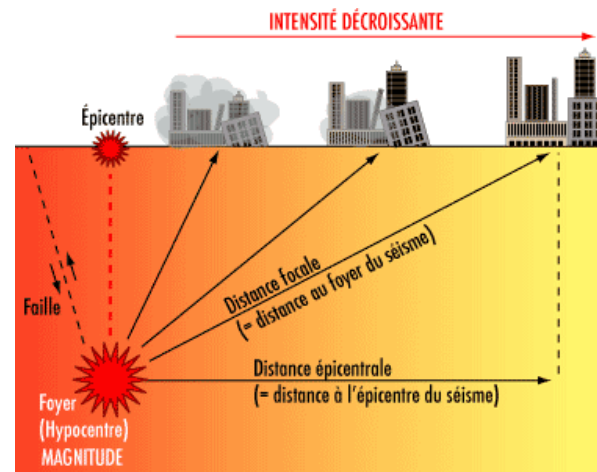
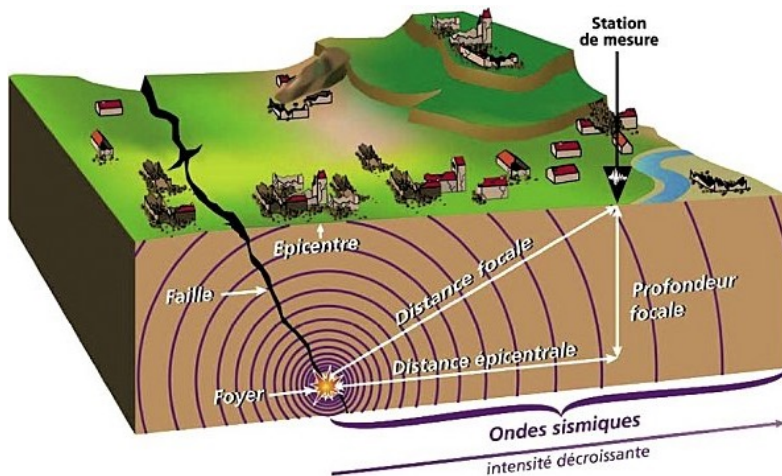
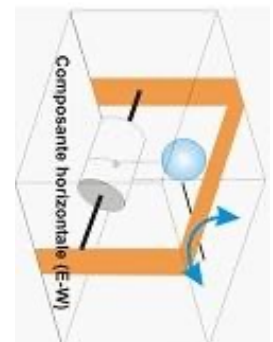
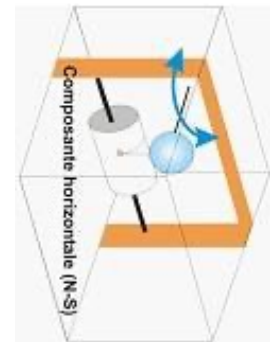
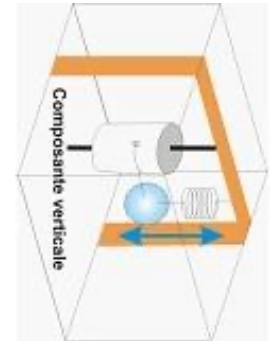
50°N

45°N

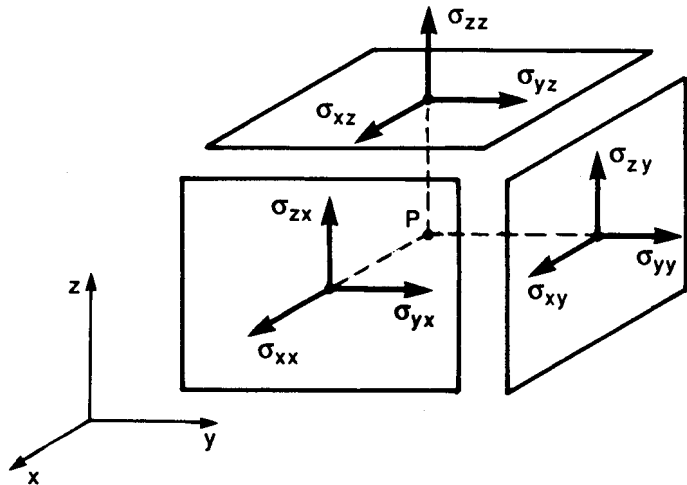
**Légende**

- Magnitude < 2
- 2 ≤ Magnitude < 3
- 3 ≤ Magnitude < 4
- 4 ≤ Magnitude < 5
- Magnitude ≥ 5

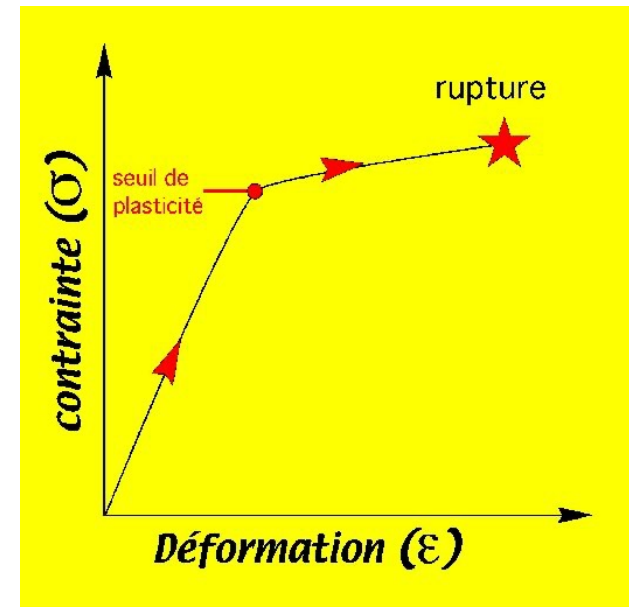
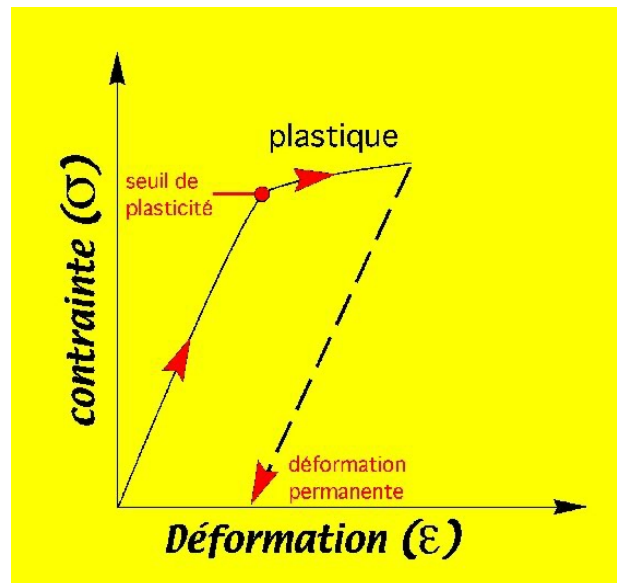
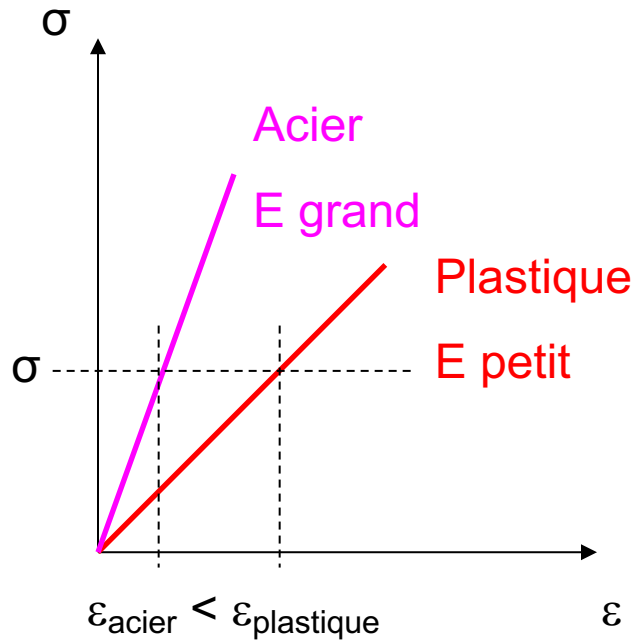
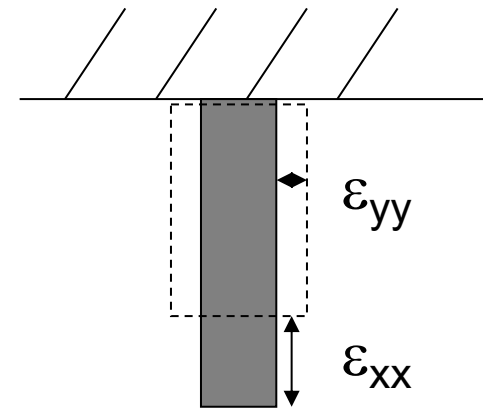
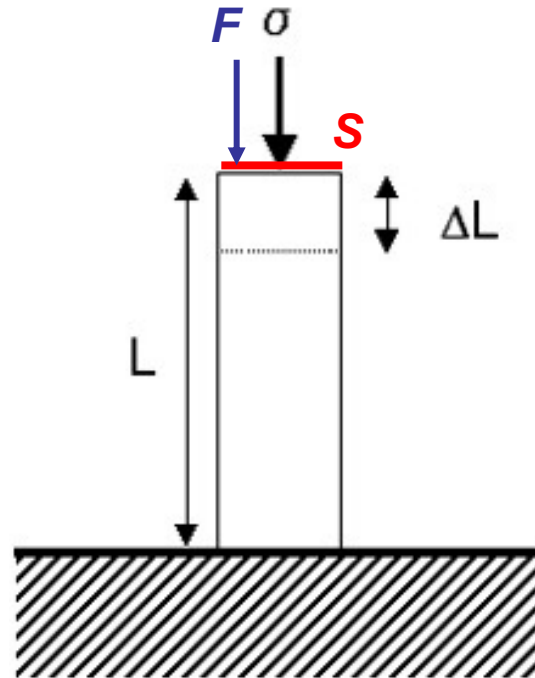
*Base de données  
du BCSF*

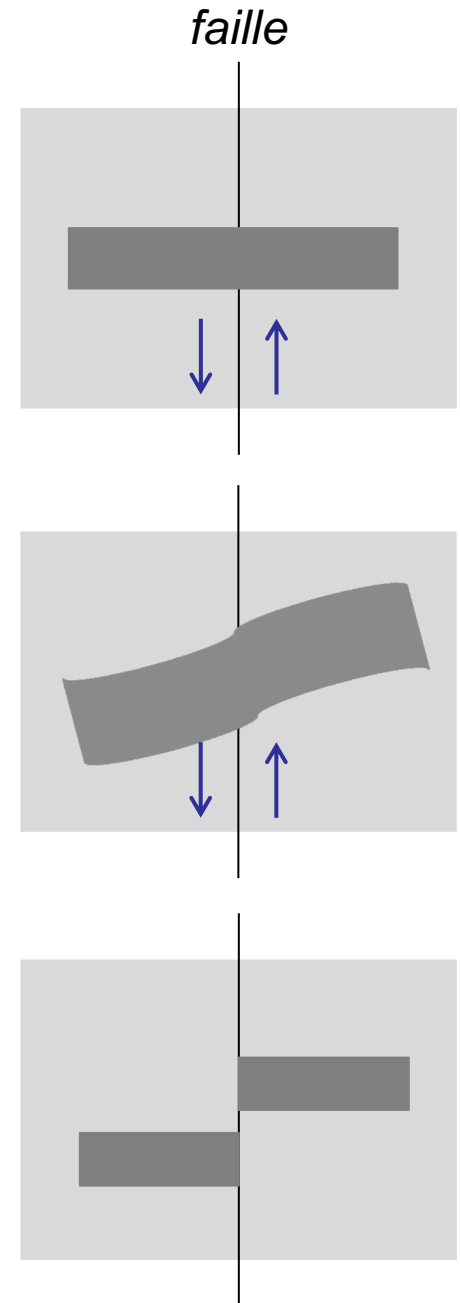
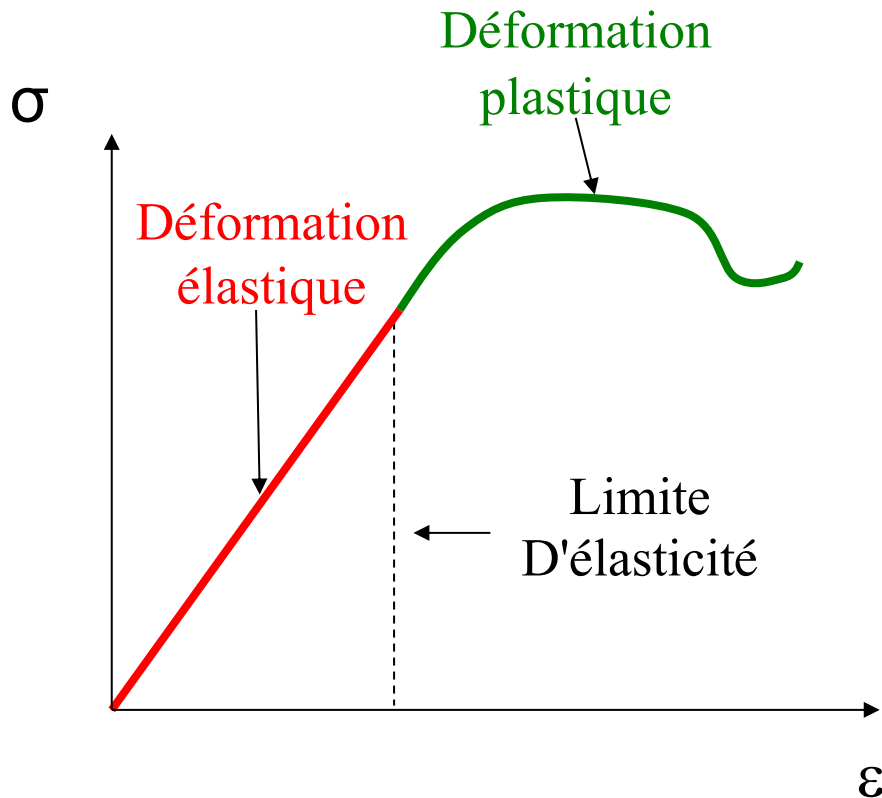
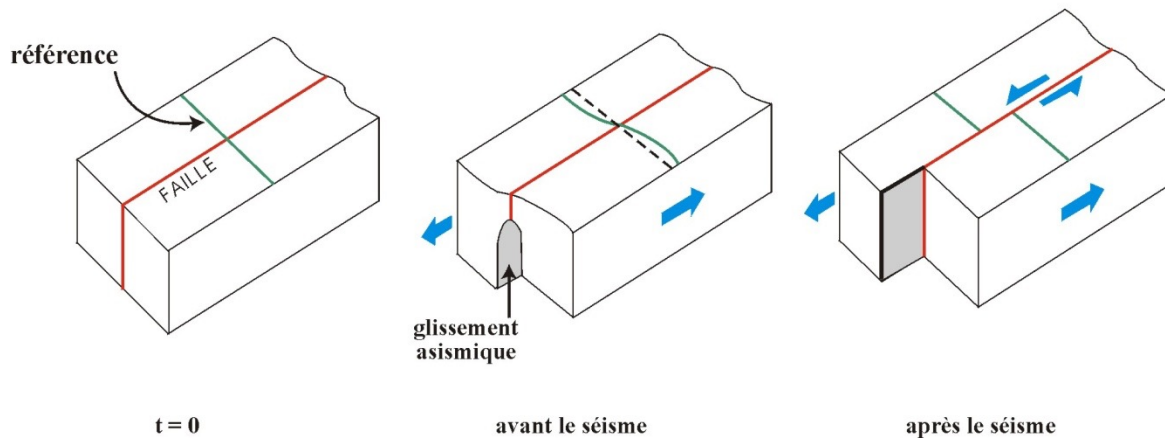


# GLST306 – Cours n° 2

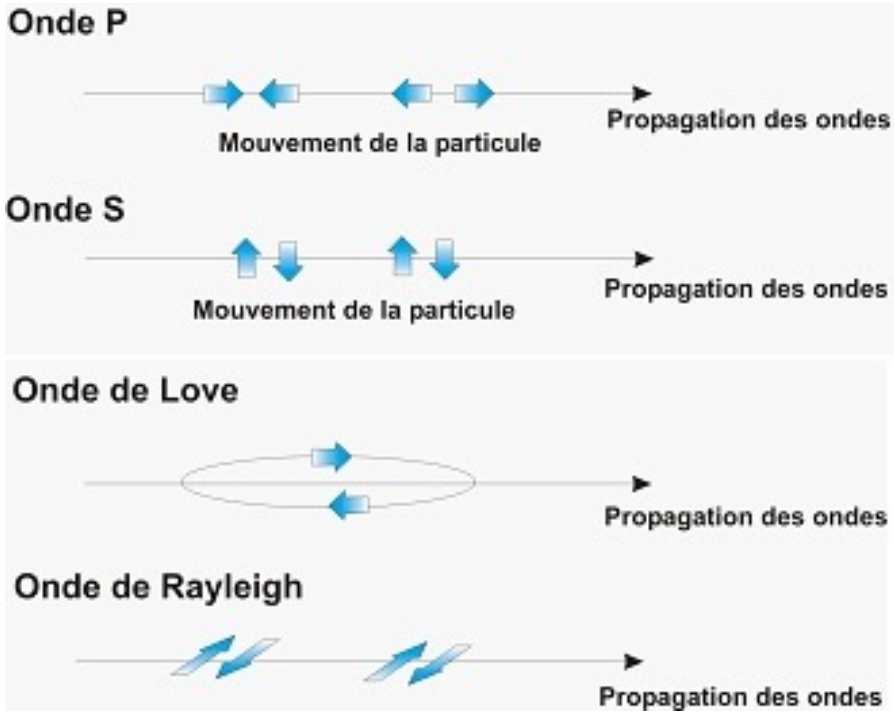


Composantes du tenseur  $[\sigma]$

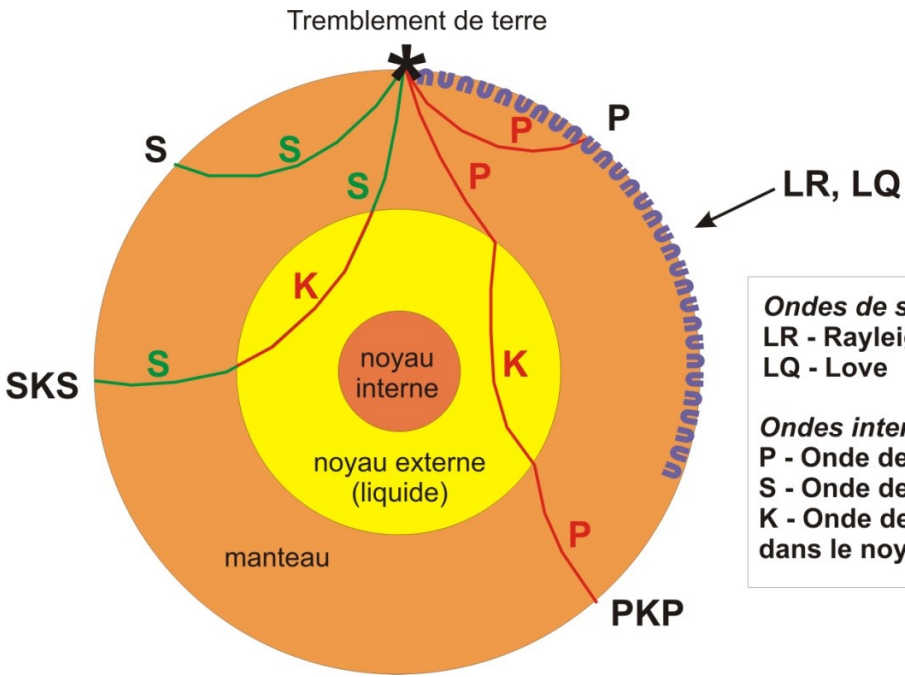
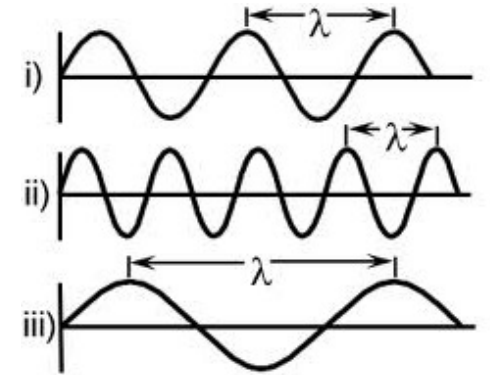
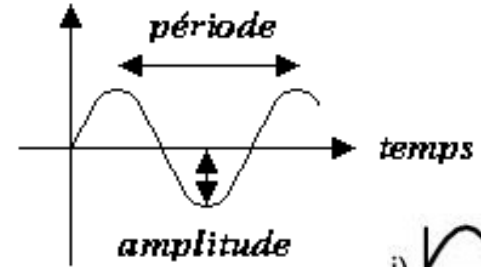








déplacement



**Ondes de surface:**  
LR - Rayleigh  
LQ - Love

**Ondes internes:**  
P - Onde de pression  
S - Onde de cisaillement  
K - Onde de pression dans le noyau externe

