

# Appareil génital féminin

Ovaire de lapine

Corps jaune de femme

Trompe utérine de femme

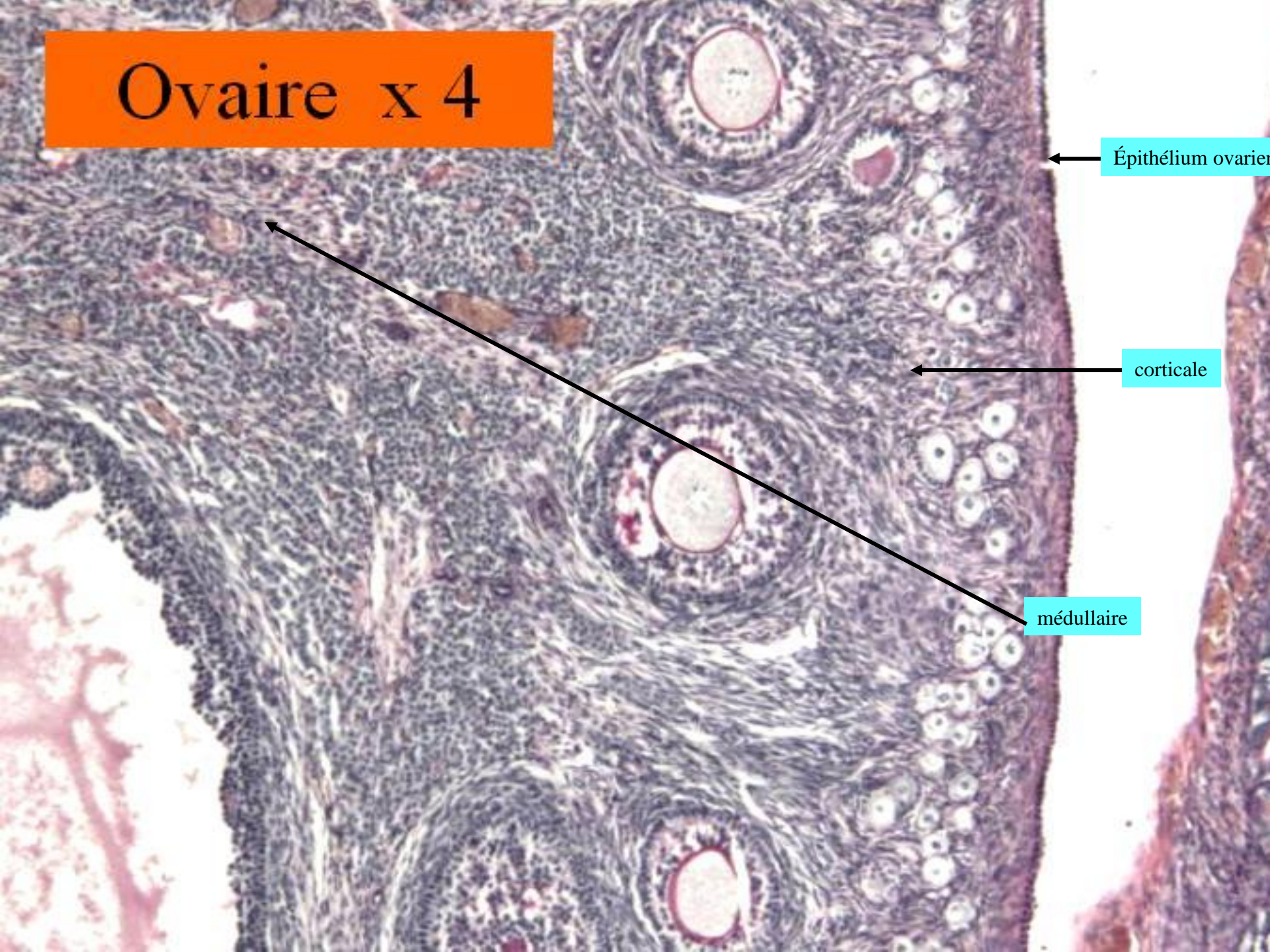
Endomètre progestatif

# Ovaire x 4

Épithélium ovarien

corticale

médullaire



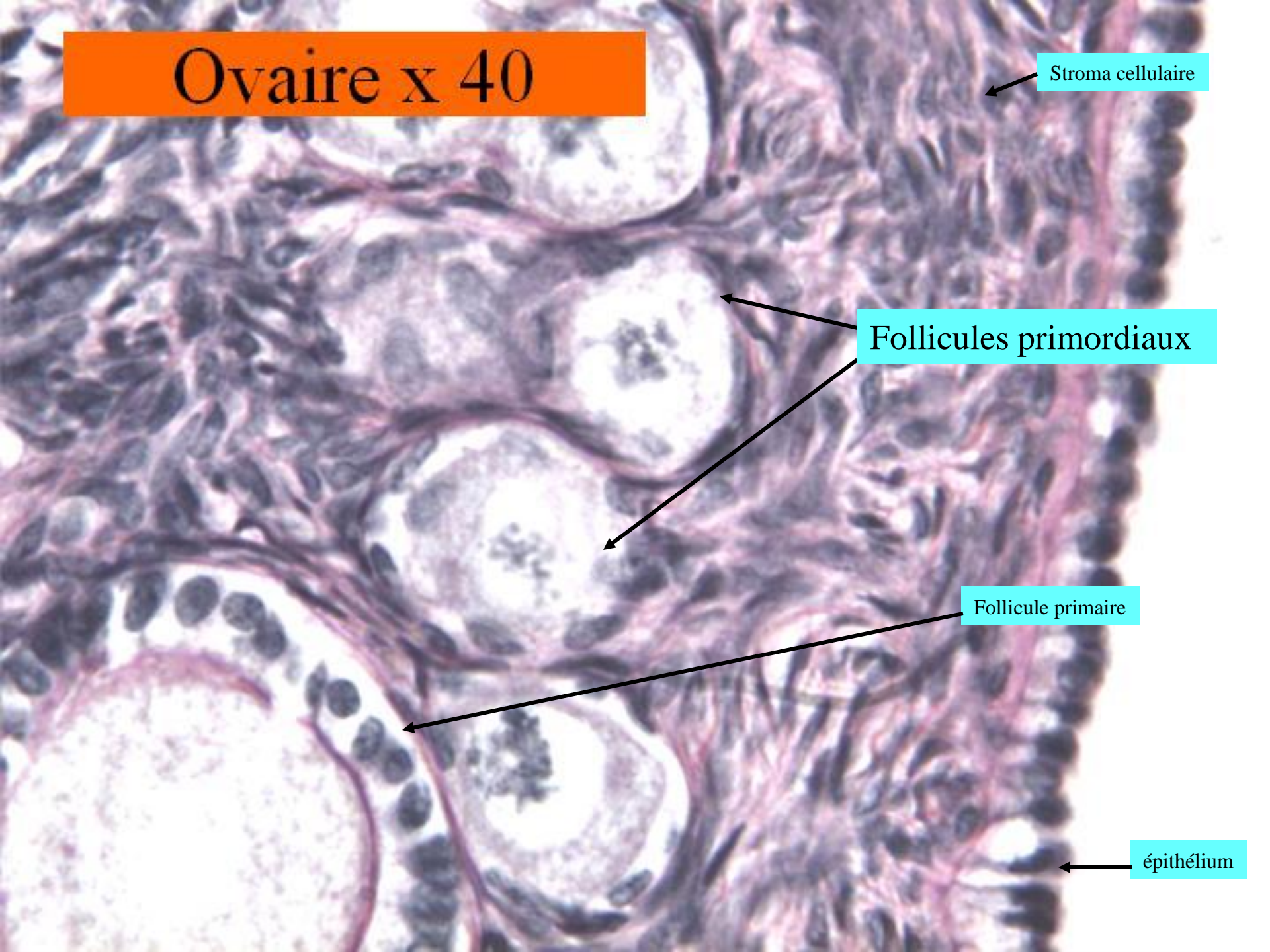
# Ovaire x 40

Stroma cellulaire

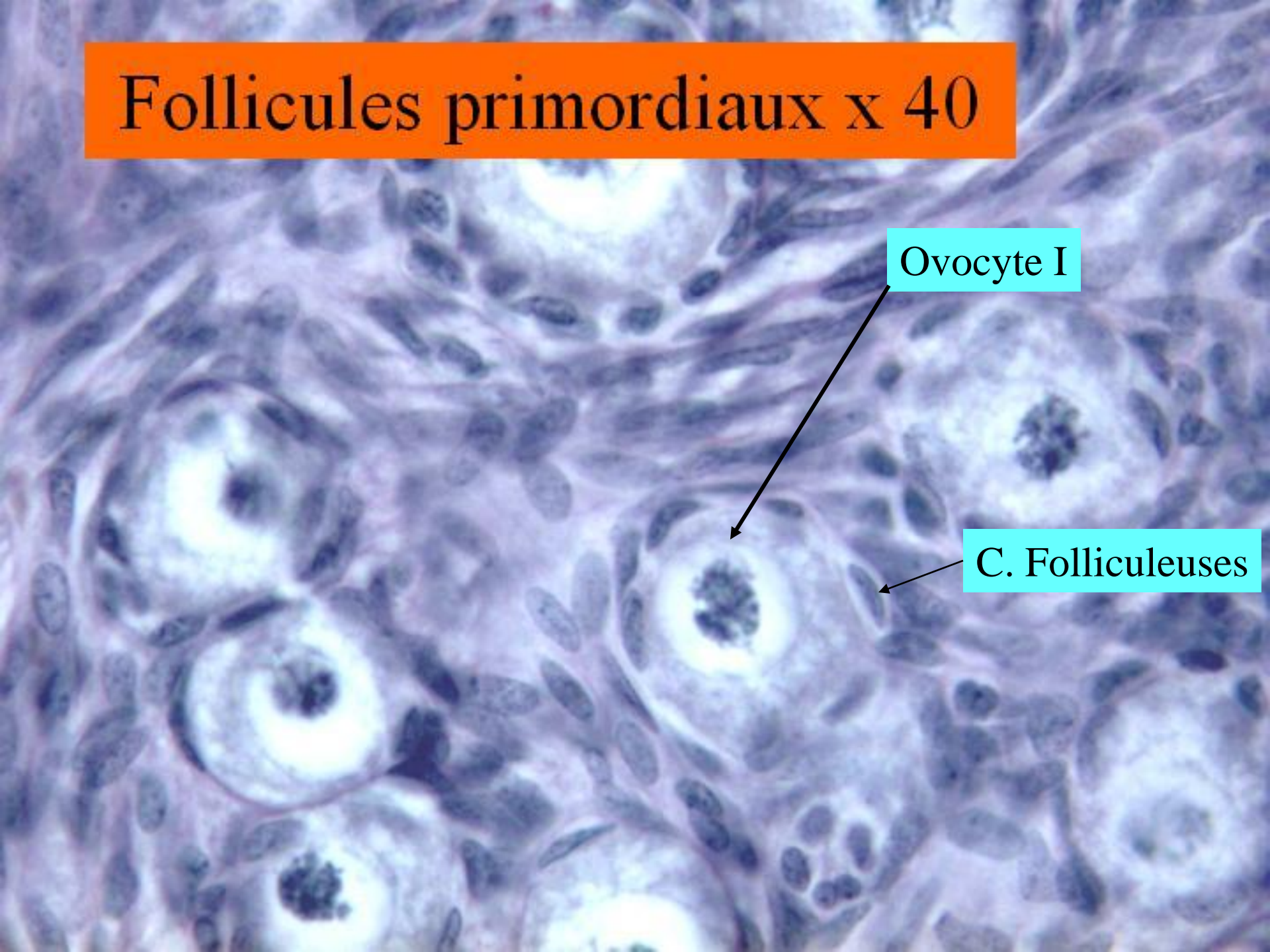
Follicules primordiaux

Follicule primaire

épithélium

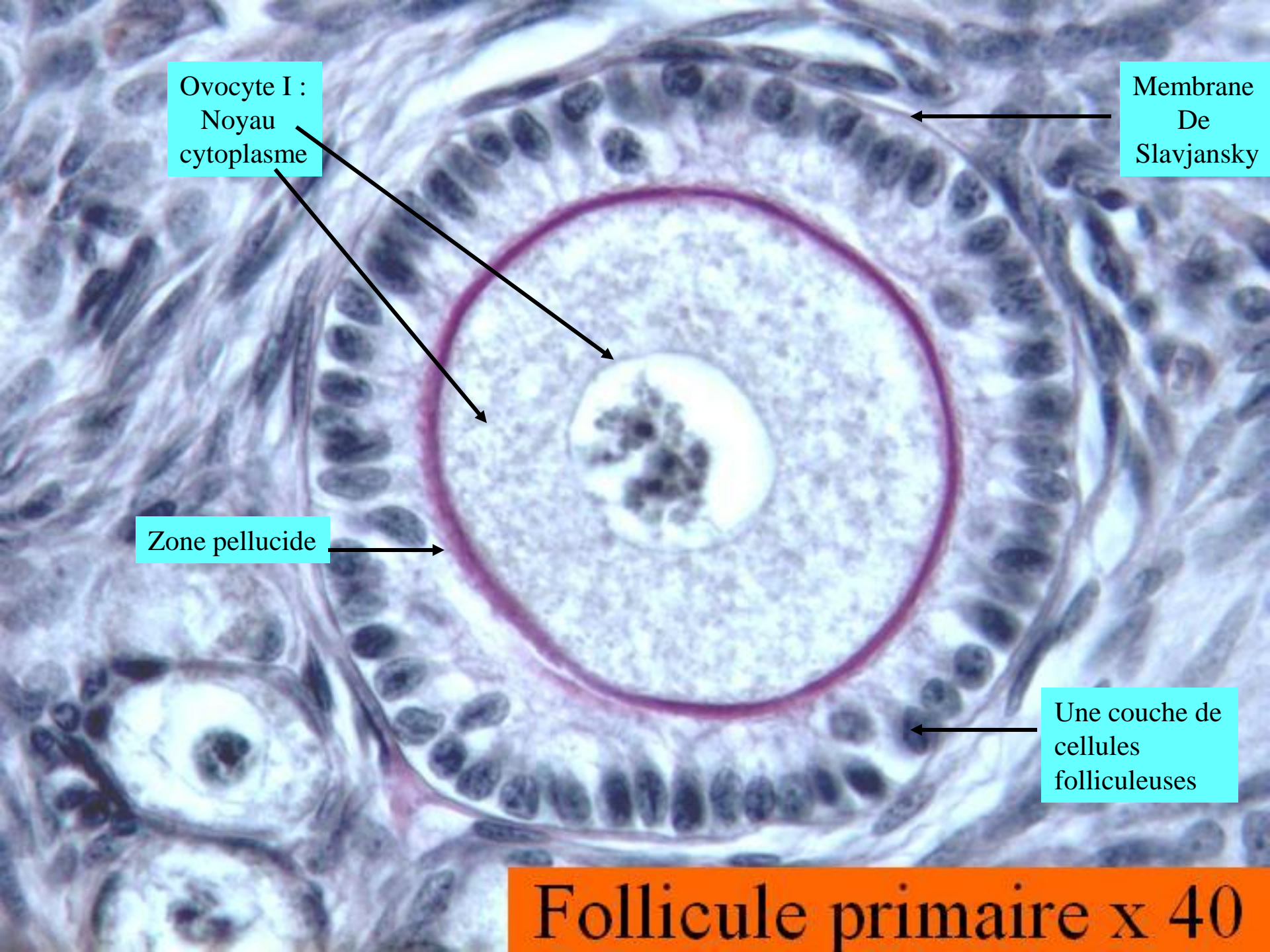


# Follicules primordiaux x 40



Ovocyte I

C. Folliculeuses



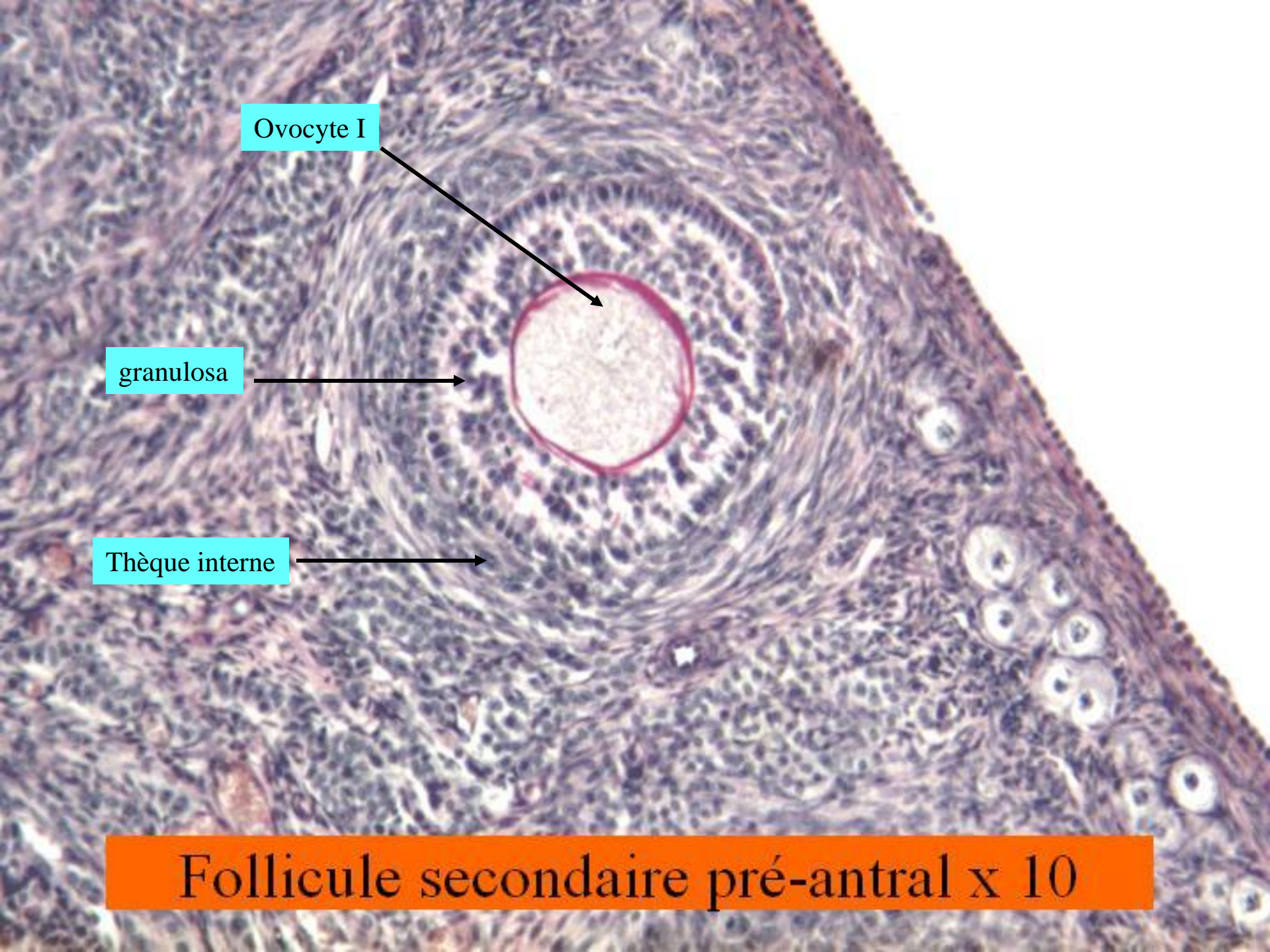
Ovocyte I :  
Noyau  
cytoplasme

Membrane  
De  
Slavjansky

Zone pellucide

Une couche de  
cellules  
folliculeuses

Follicule primaire x 40



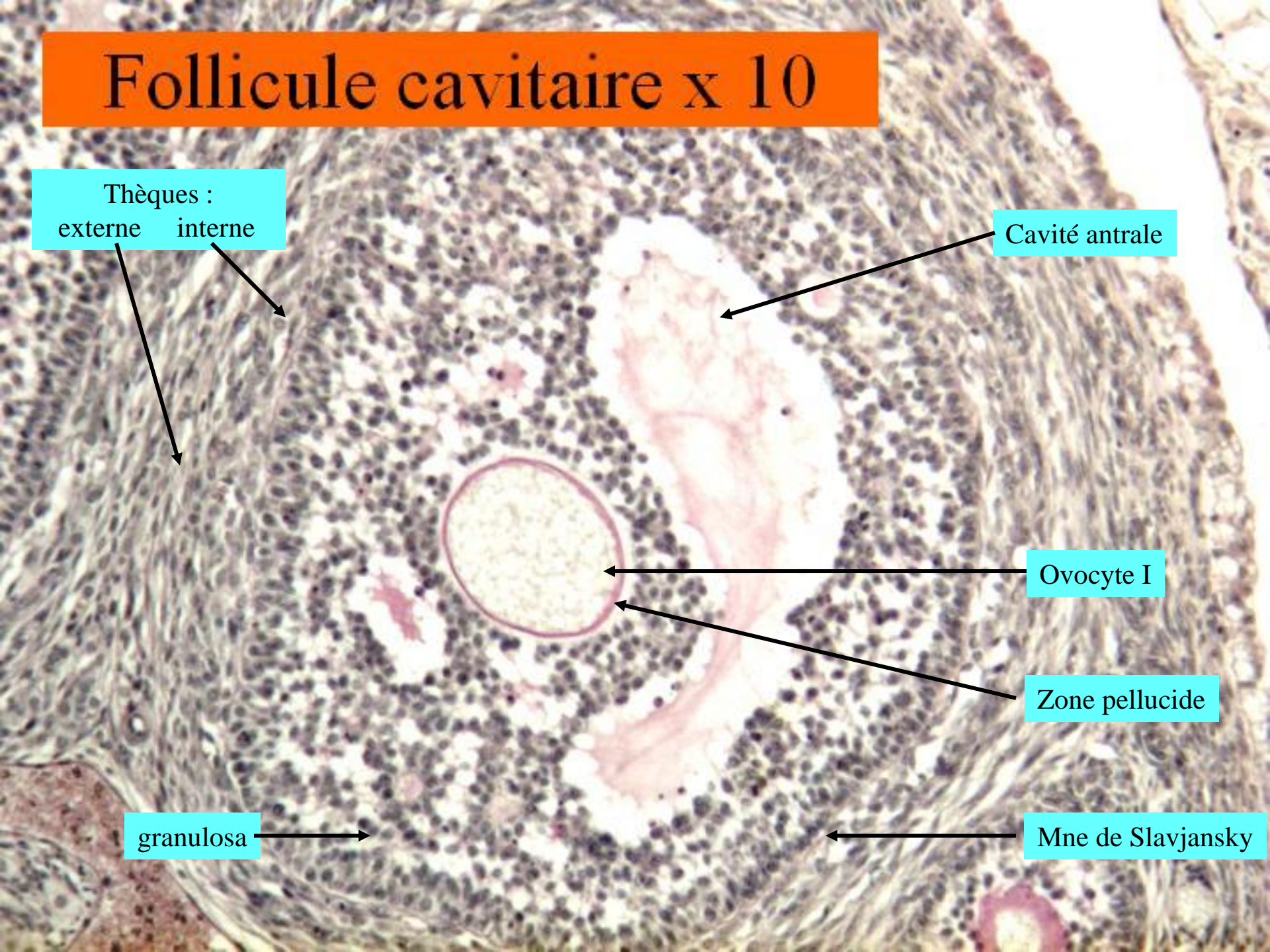
Ovocyte I

granulosa

Thèque interne

Follicule secondaire pré-antral x 10

# Follicule cavitaire x 10



Thèques :  
externe interne

Cavité antrale

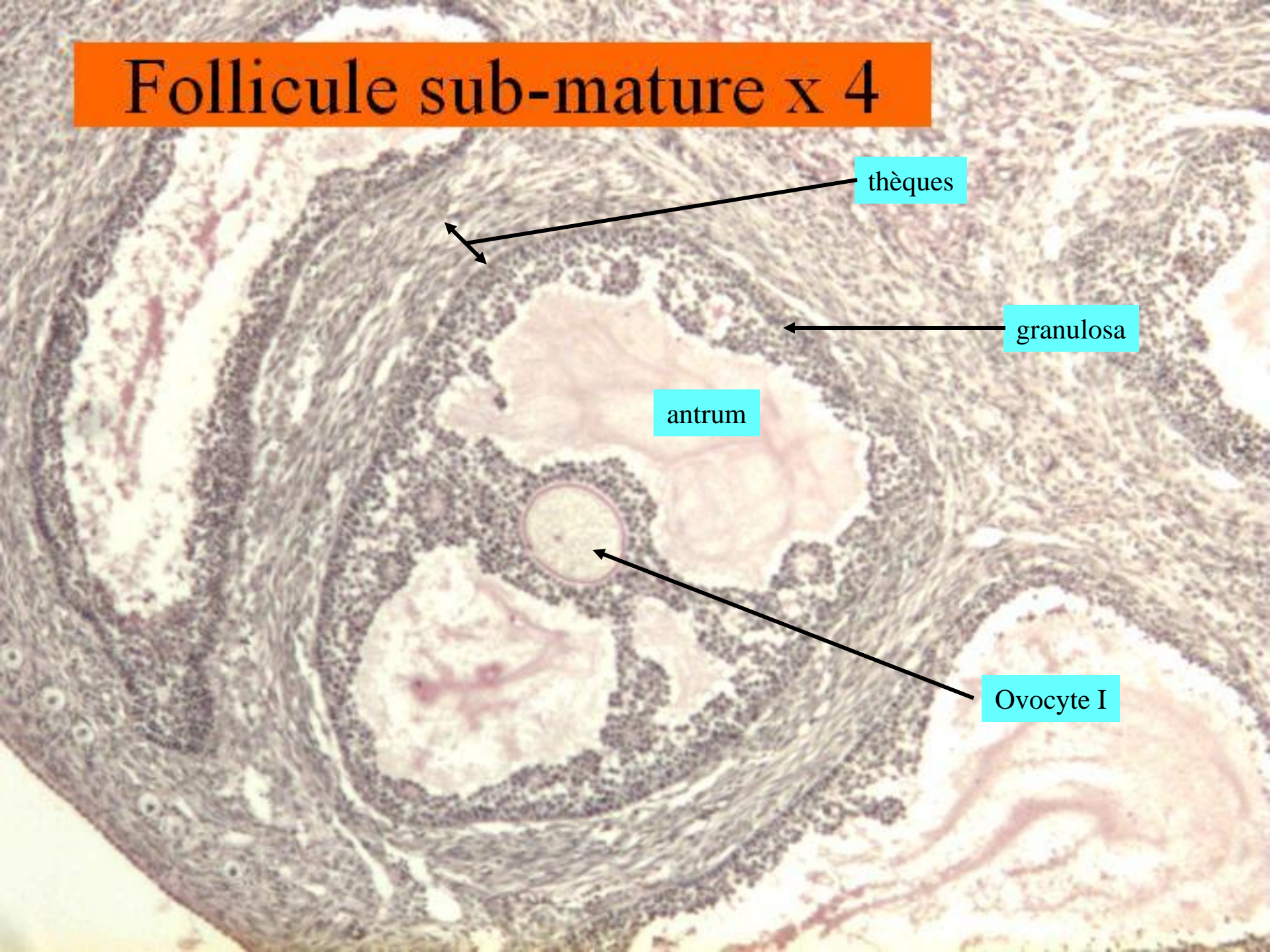
Ovocyte I

Zone pellucide

granulosa

Mne de Slavjansky

# Follicule sub-mature x 4



thèques

granulosa

antrum

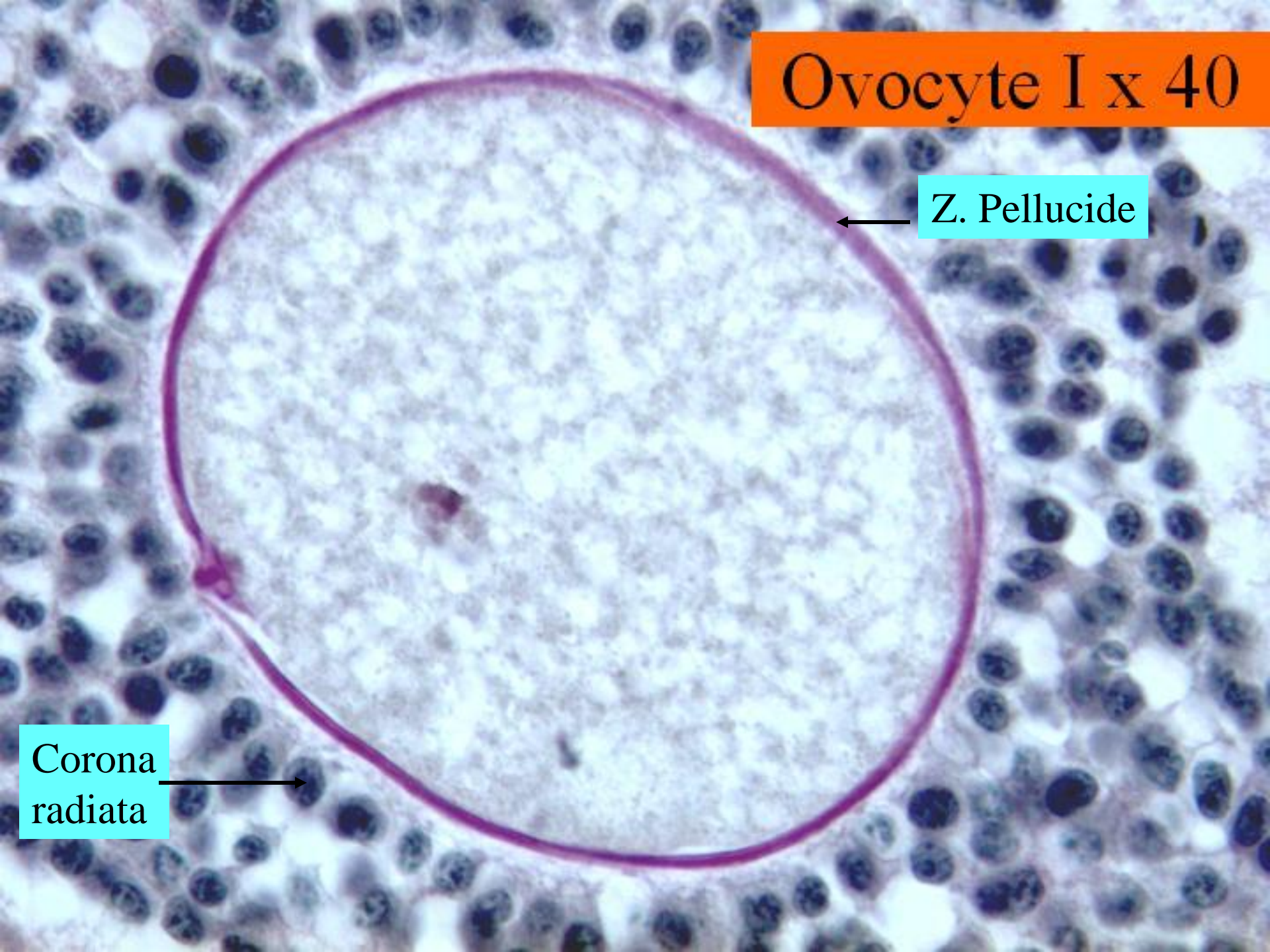
Ovocyte I



# Ovocyte I x 40

Z. Pellucide

Corona radiata



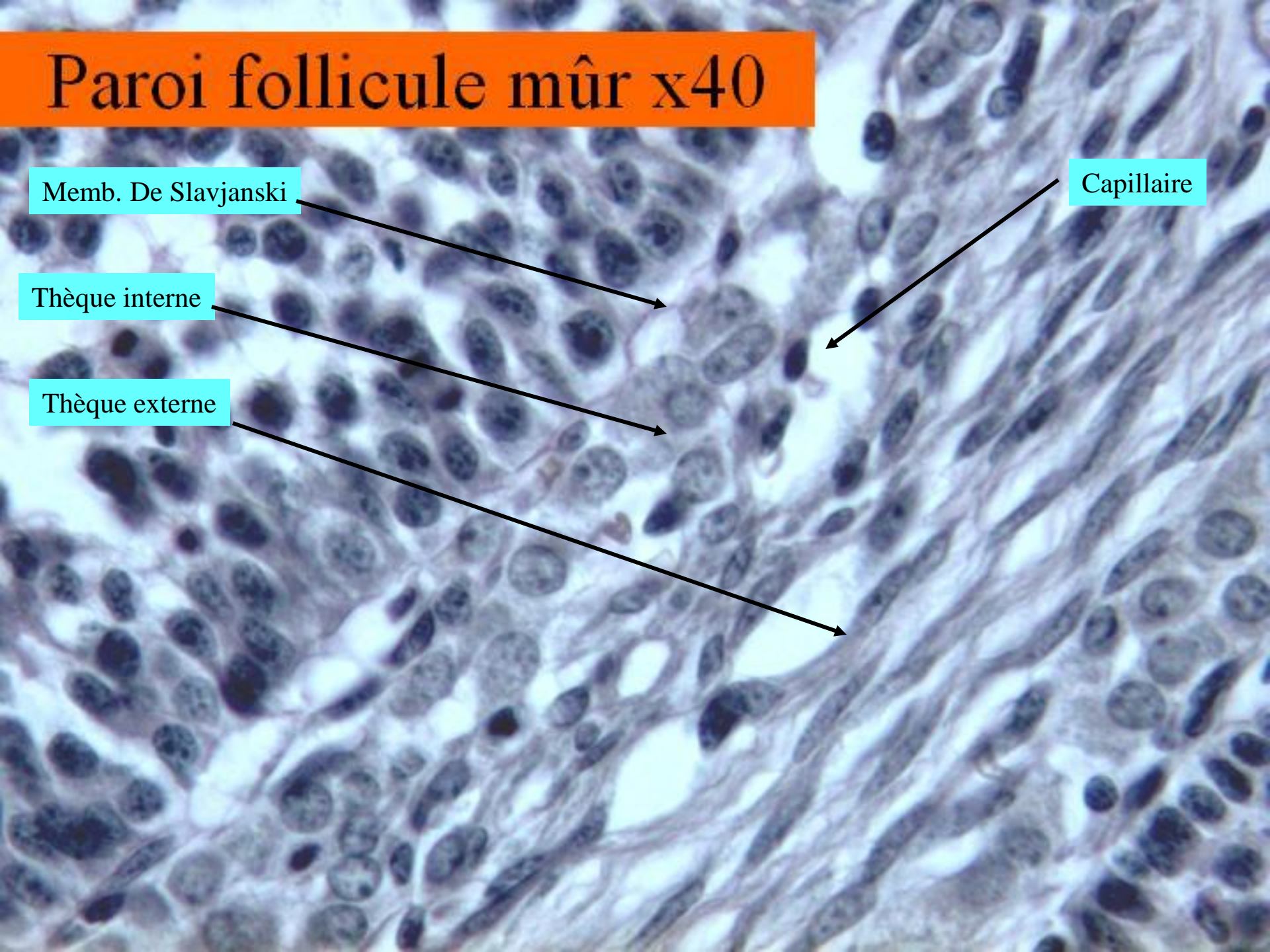
# Paroi follicule mûr x40

Memb. De Slavjanski

Thèque interne

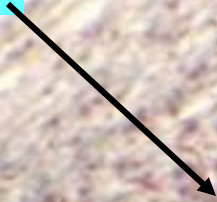
Thèque externe

Capillaire



# Corps jaune x 4

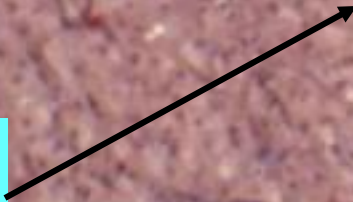
Thèque externe



Petites cellules  
lutéales



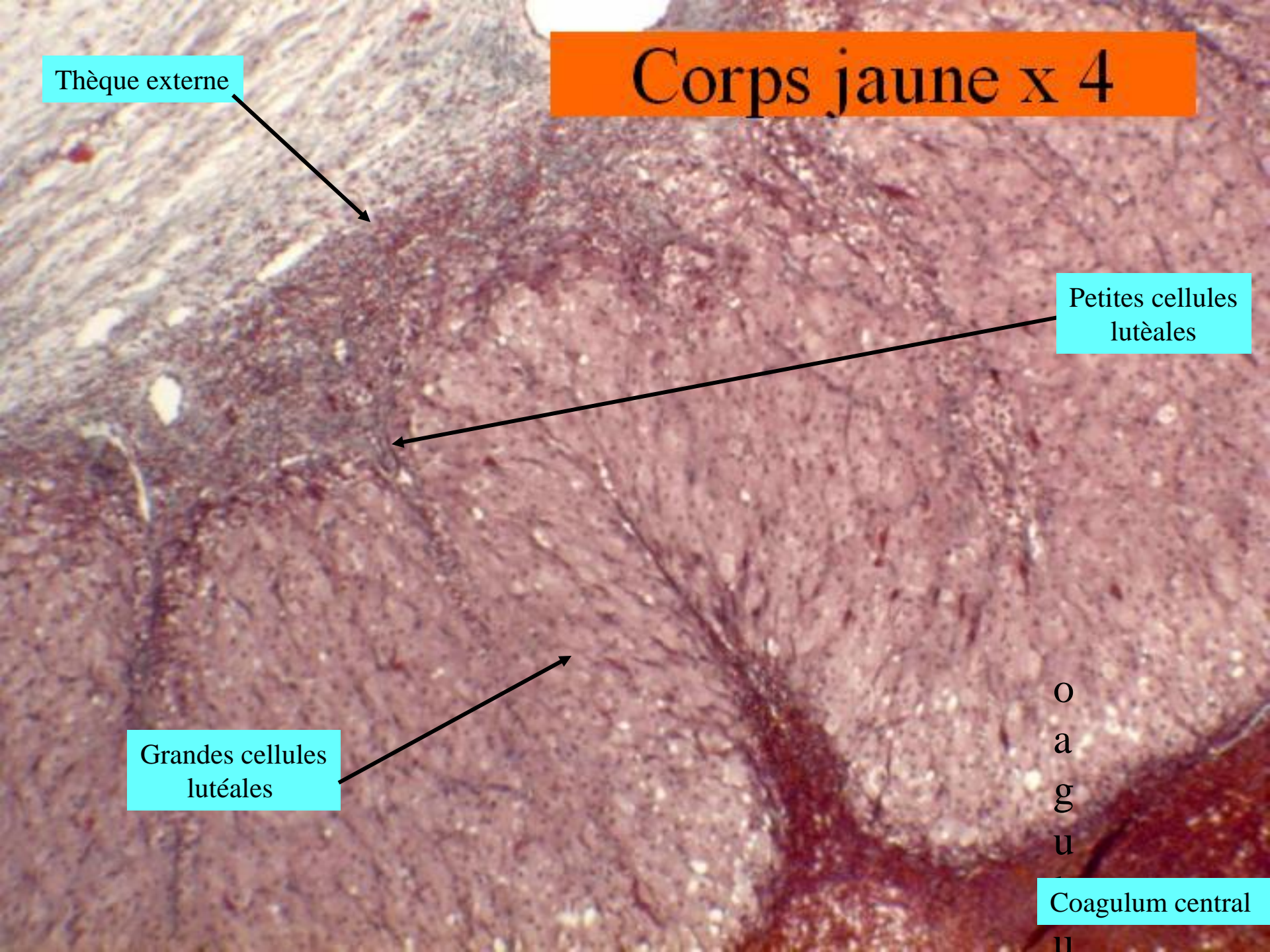
Grandes cellules  
lutéales



O  
a  
g  
u  
l

Coagulum central

ll

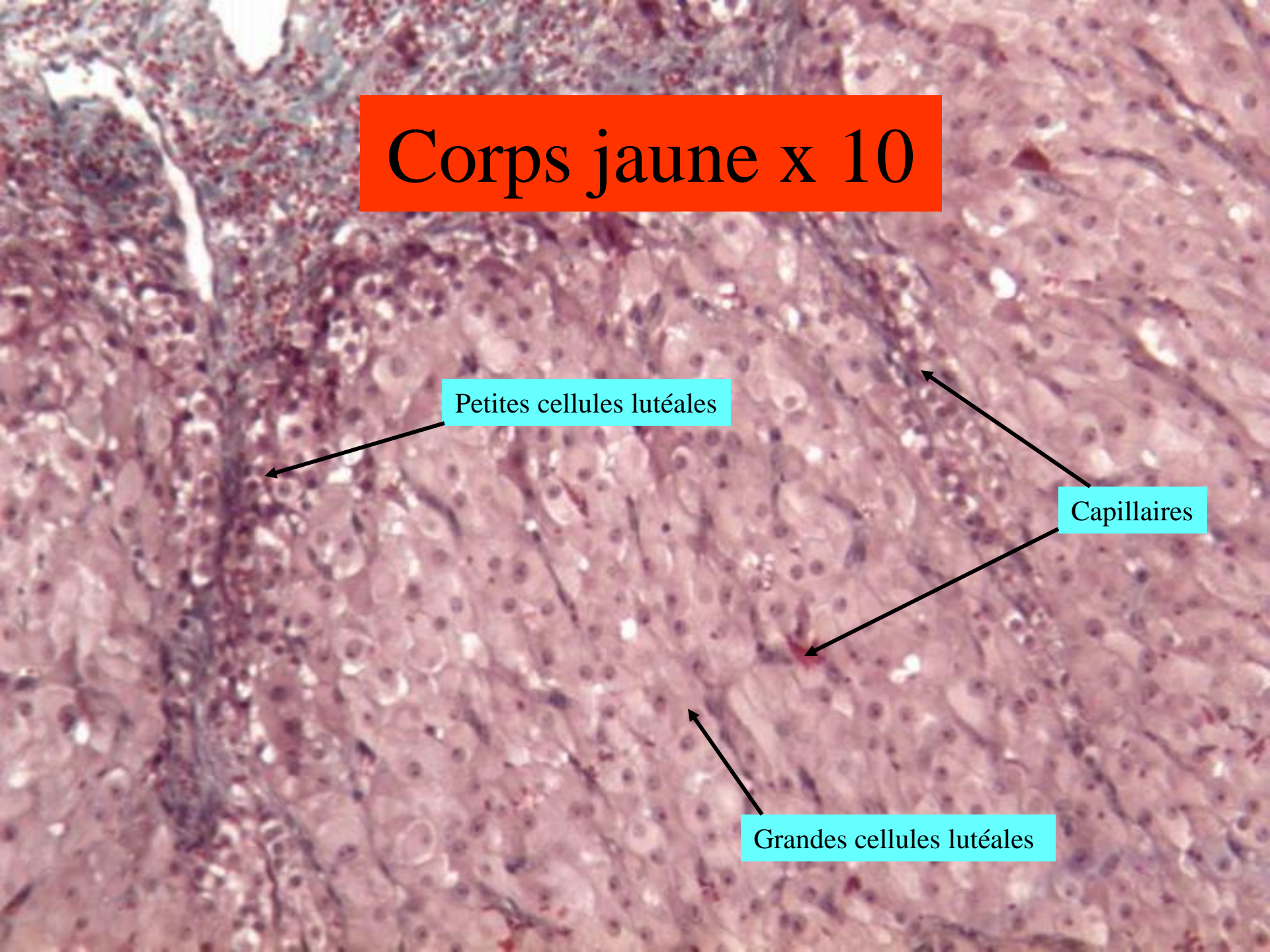


# Corps jaune x 10

Petites cellules lutéales

Capillaires

Grandes cellules lutéales

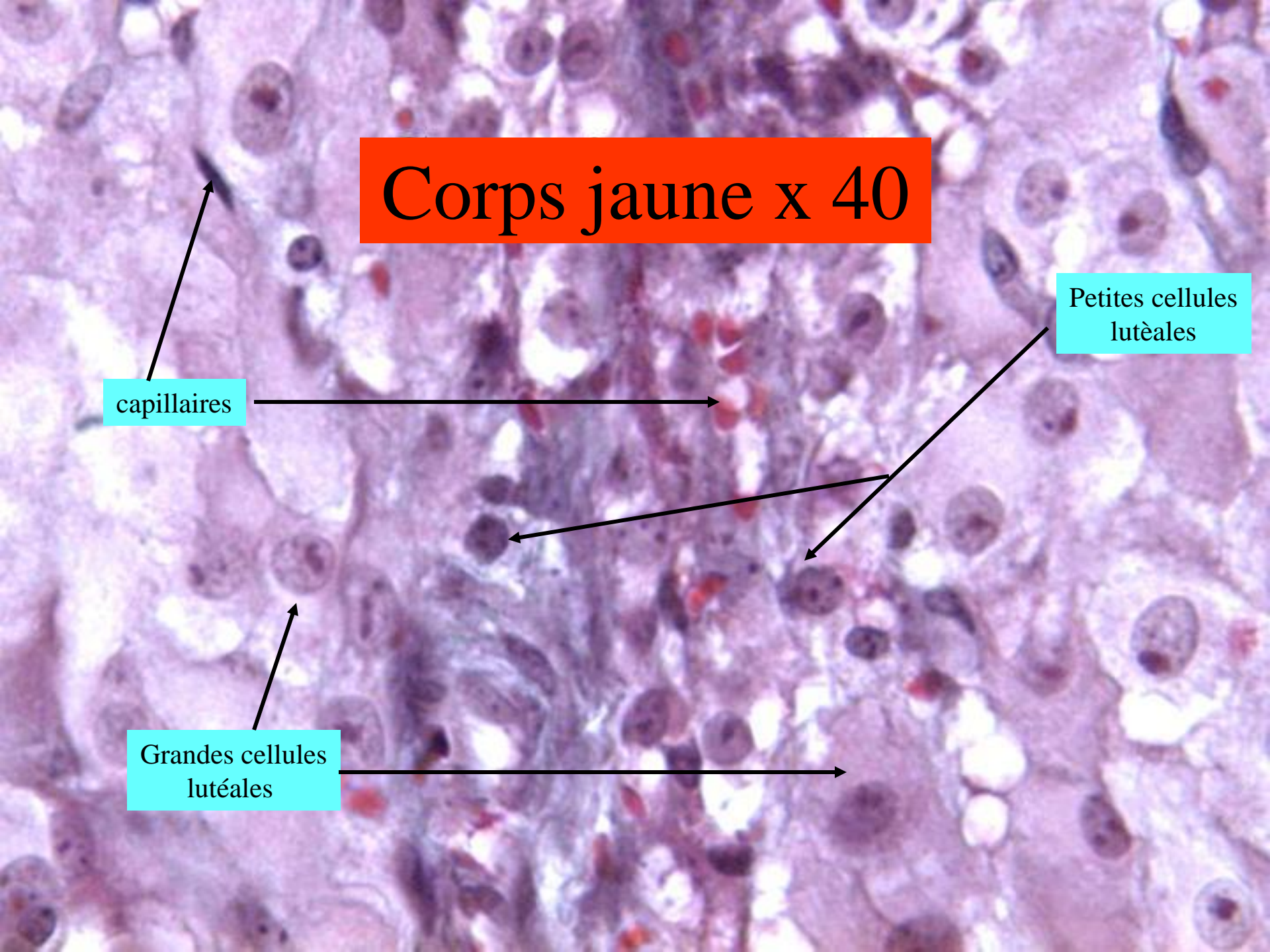


# Corps jaune x 40

capillaires

Petites cellules  
lutéales

Grandes cellules  
lutéales

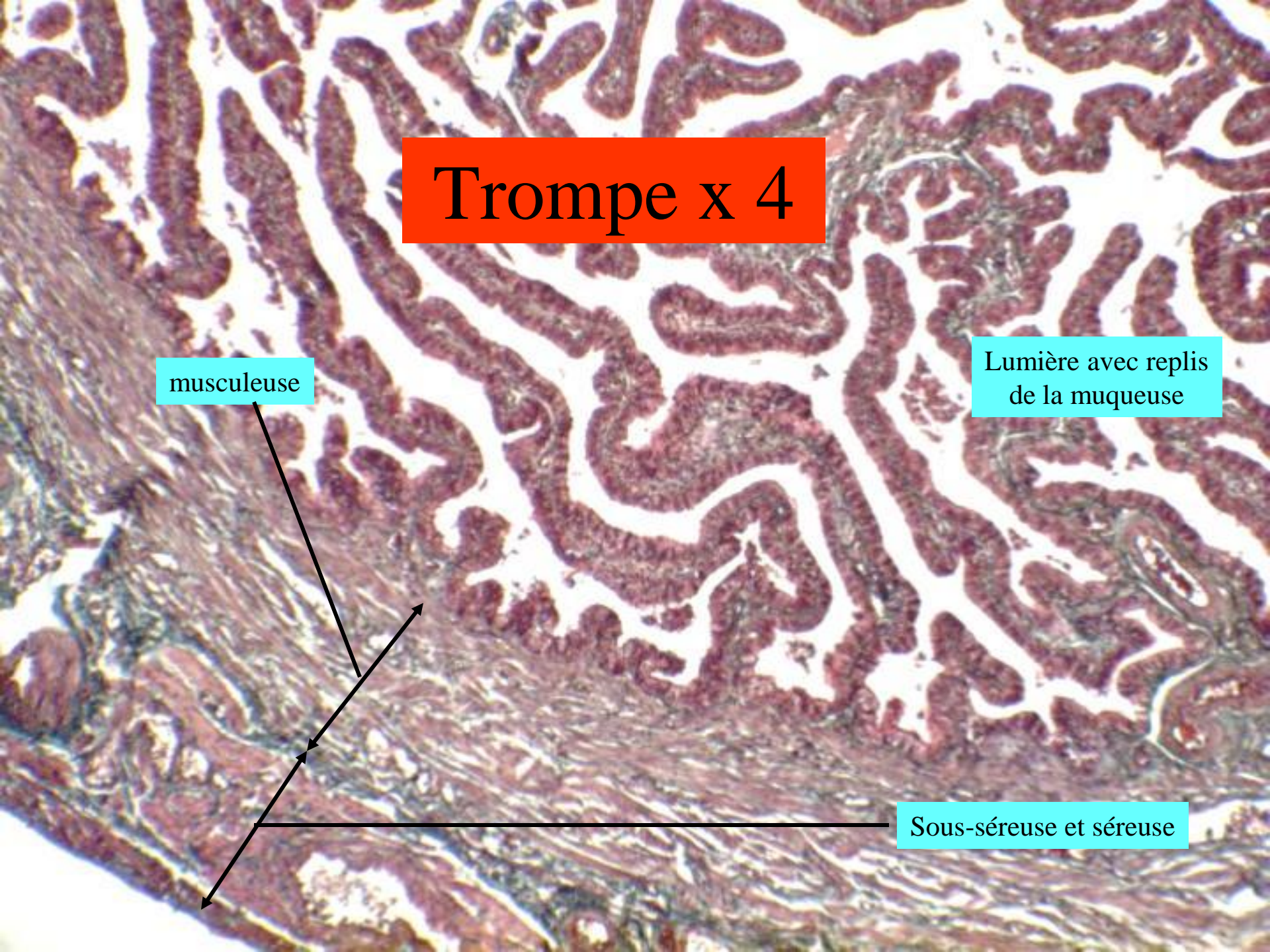


# Trompe x 4

musculeuse

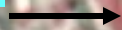
Lumière avec replis  
de la muqueuse

Sous-séreuse et séreuse

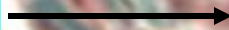


# Trompe x 10

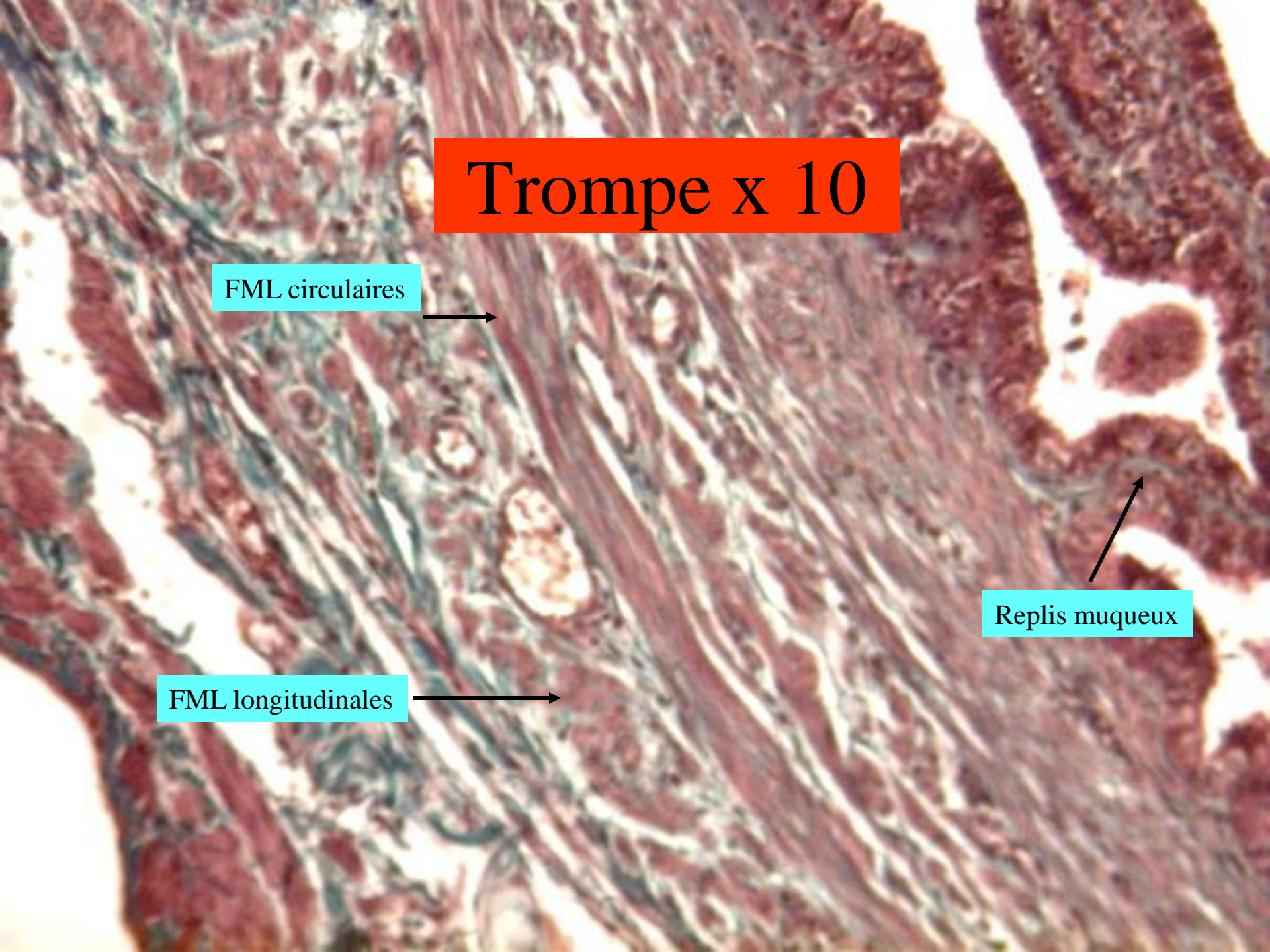
FML circulaires



FML longitudinales



Replis muqueux

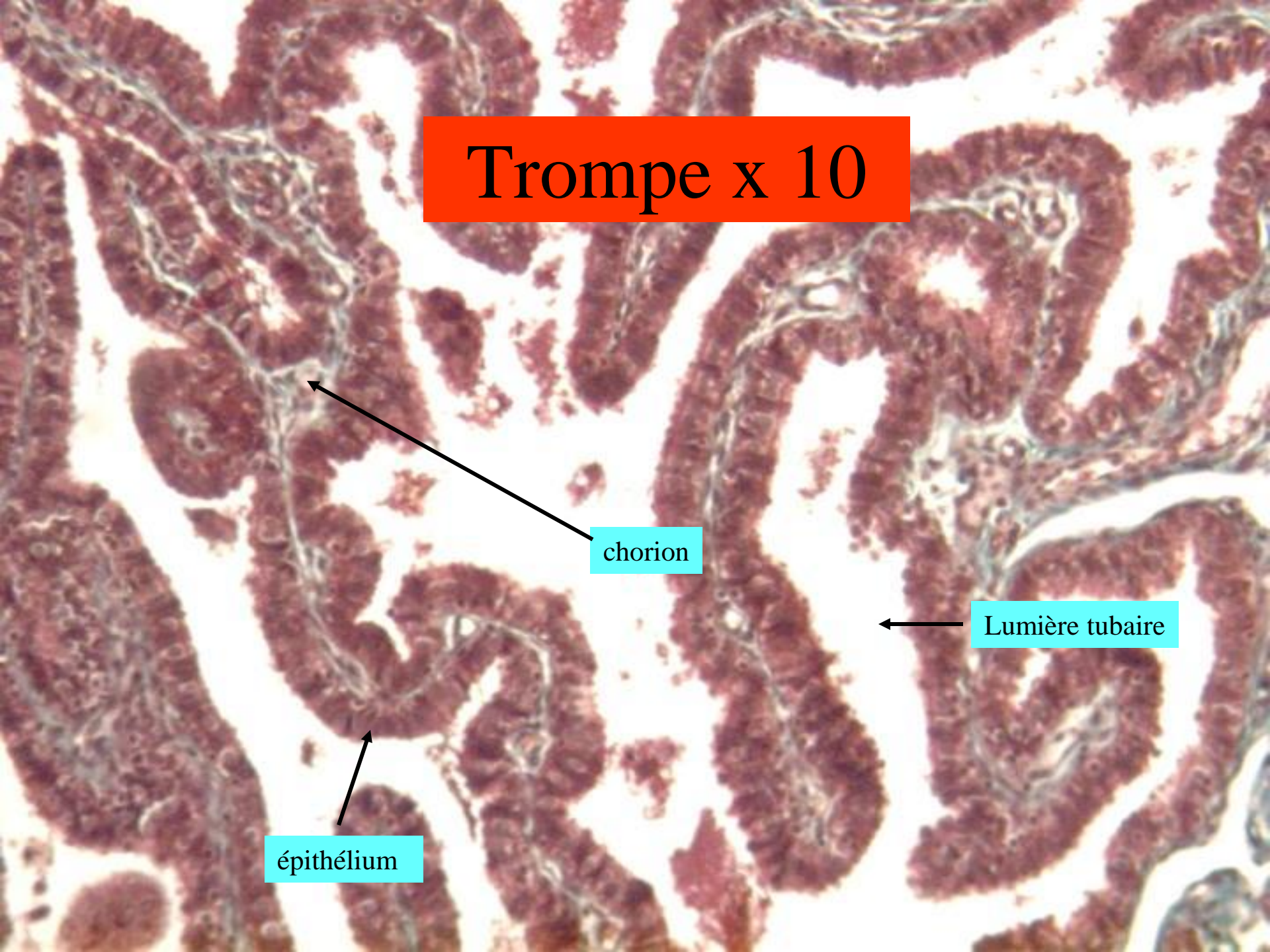


# Trompe x 10

chorion

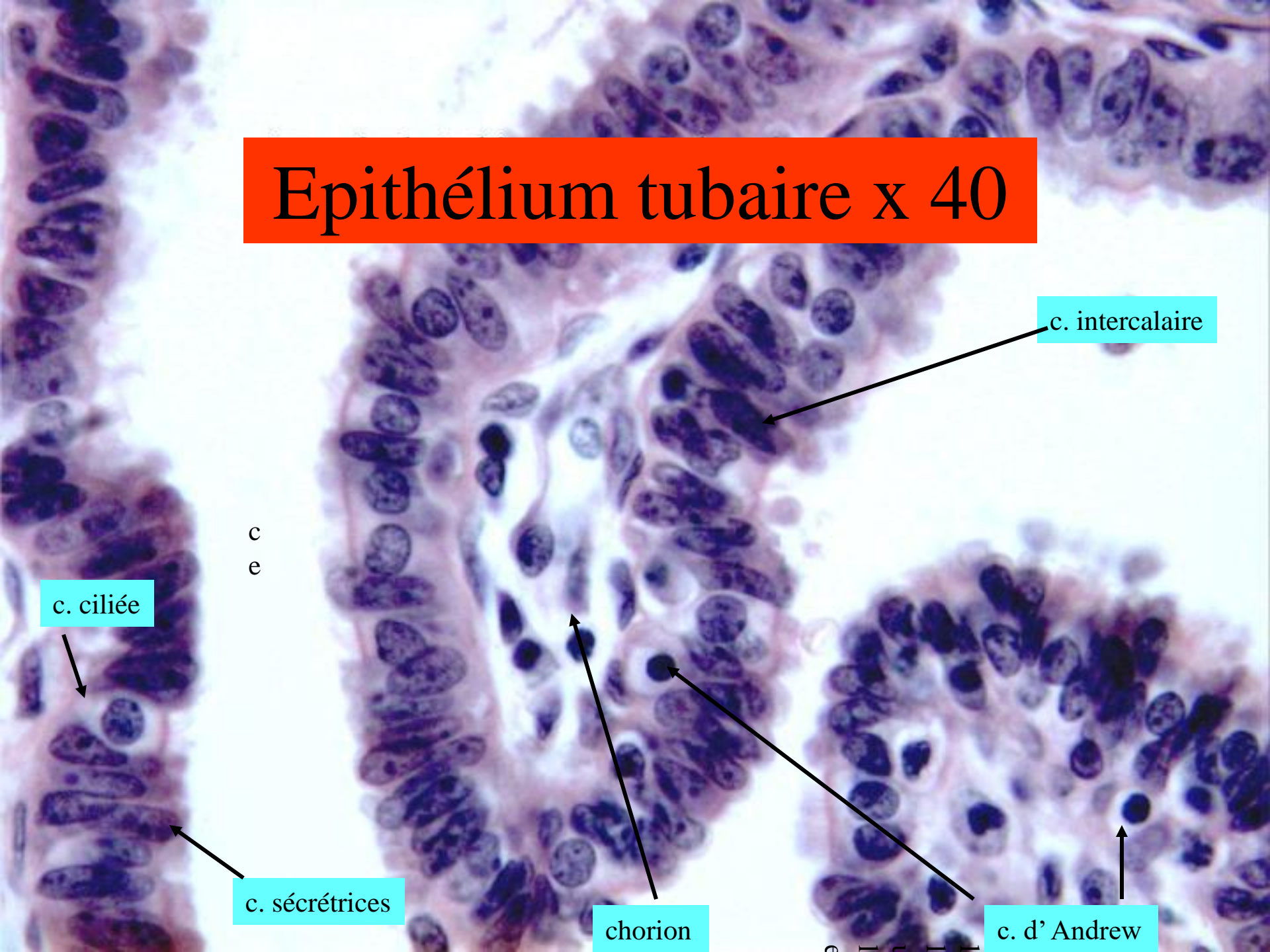
Lumière tubaire

épithélium





# Epithélium tubaire x 40



c. ciliée

c. sécrétrices

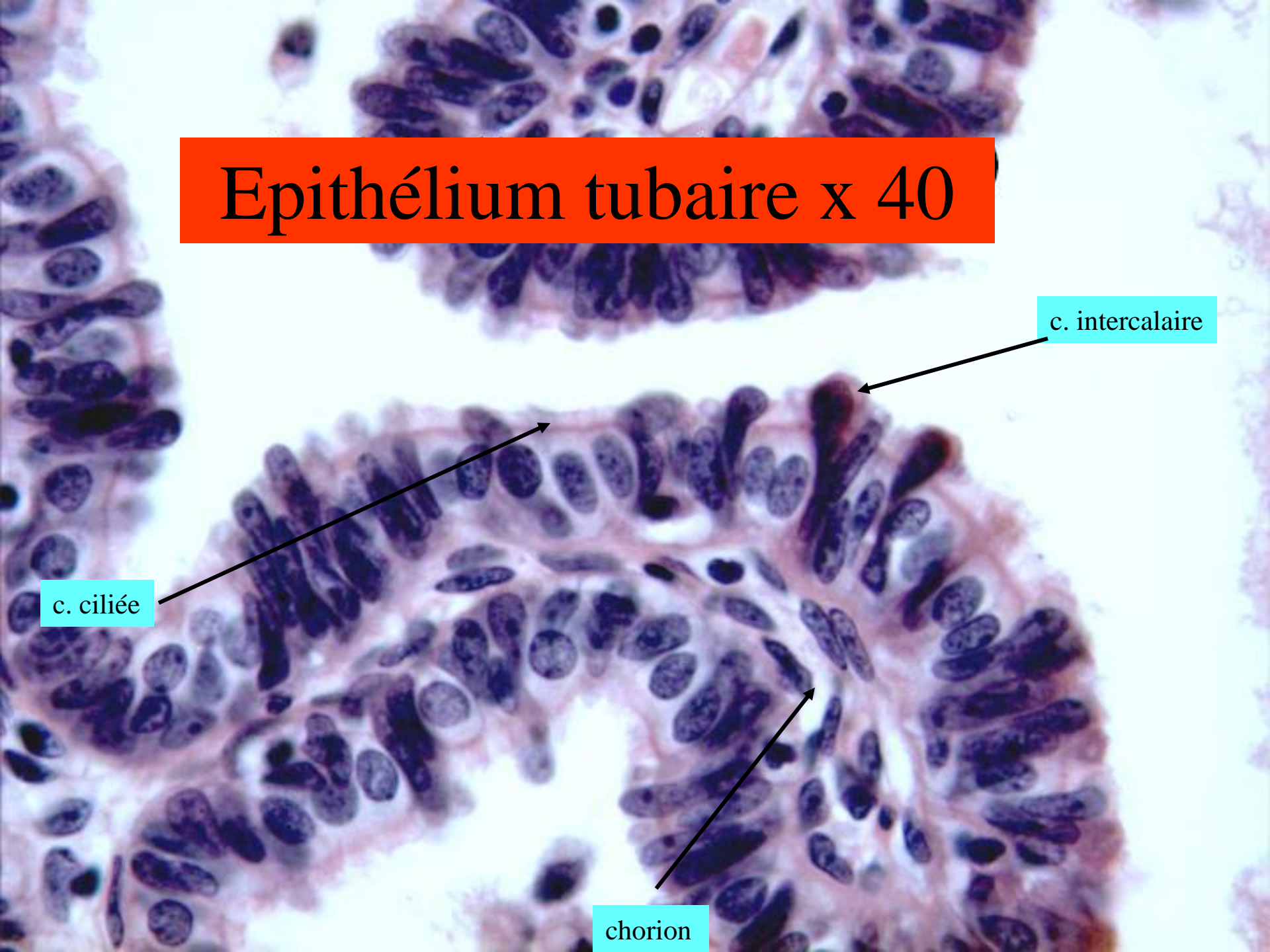
chorion

c. intercalaire

c. d'Andrew

c  
e

# Epithélium tubaire x 40



c. intercalaire

c. ciliée

chorion